

MISATO VIEW

Issued Quarterly

No.122 November 2023 - January 2024

The Opening of MISATO NAGAREYAMA BRIDGE



“MISATO NAGAREYAMA BASHI TOLL ROAD” including ‘MISATO NAGAREYAMA BRIDGE’

MISATO NAGAREYAMA BASHI TOLL ROAD is a part of the ‘urban axis roads’ that connect urban areas along the Tsukuba Express Railway Line in Saitama, Chiba and Ibaraki Prefectures.

The new bridge was built to alleviate chronic traffic congestions on the existing bridges over the Edogawa River.

Start and end points: Zemma, Misato City - Miwanoyama, Nagareyama City (Length: 2.0 Km)

Project entity: Saitama Prefecture Road Public Corporation



<Tollgate>

Tolls	Category of Vehicles	Standard	Medium	Large	Extra Large	Light Motor	*Light vehicles etc.
	Toll	150 yen	200 yen	260 yen	410 yen	100 yen	20 yen

***Light vehicles:** As bicycles are categorized as a type of ‘Light vehicles’, cyclists are charged the toll of 20 yen for one way.

***Traffic on foot is free of charge.**

Inquiries: Smart Interchange Development Section, Infrastructure Improvement Division **Phone:** 048-930-7824

- Contents -

The Opening of MISATO NAGAREYAMA BRIDGE Protect Yourself from Winter Infections! Notice on Changing of Water Charges Tips to Make Tap Water Taste Better Collection of Small Rechargeable Batteries	p.1	Administrative Information -Industrial Festa -Information on the Year-end and New Year service of Resident Affairs Division -Misato City Fire Brigade’s New Year Ceremony Bulletin Board -Illuminations in Misato City	p.5
	p.2		
	p.3		
	p.4		
			p.6

Protect yourself from winter infections !

~Influenza & Norovirus~

Influenza epidemic peaks in January and February!

Symptoms such as fever over 38°C, headache, joint pain, muscle pain, and general malaise appear quickly.

To avoid getting the flu

- Vaccinate before the epidemic.
It is recommended to be inoculated by mid- December.
- Wash hands upon returning home, etc.
- Maintain moderate humidity (50-60%).
- Take adequate rest and balanced nutrition.
- Refrain from going out to crowded and downtown areas.

If you get the flu

- Keep yourself well hydrated.
- Get adequate rest.
- See a doctor without hesitation.
If you start taking anti-influenza virus medication within 48 hours after the onset of symptoms, you can expect such effects as shortening the duration of fever.
Take prescribed medicines as directed by your doctor.
- Keep cough etiquette in mind.

《What is cough etiquette?》

When coughing or sneezing, do not cough or sneeze at people and if you suddenly feel like you are about to cough or sneeze, cover your mouth and nose with a tissue etc.

This etiquette is to avoid passing colds and flu to others.

① Ministry of Health, Labour and Welfare Influenza (General page) <In Japanese>

URL https://www.mhlw.go.jp/stf/seisakunitsuite/bunya/kenkou_iryou/kenkou/kekkakukansenshou/infuenza/index.html

② Saitama Prefecture Infections Disease Surveillance Center

<In Japanese>

URL <https://www.pref.saitama.lg.jp/b0714/surveillance/>

③ Prime Minister's Office of Japan

冬の感染症に注意 (Protect yourself from winter infections) <In Japanese>

URL https://www.kantei.go.jp/jp/headline/winter2012_kansen.html



Beware of food poisoning and infectious diseases caused by norovirus in winter!

Within one to two days after infection, severe vomiting and diarrhea may appear, and some people may also have fever, headache, etc.

It is very contagious, and infants and the elderly are more vulnerable to the onset and severity of the disease, so be especially careful.

There are two main routes of infection: human-to-human infection and food-to-food infection.

To avoid contracting norovirus

- Frequently wash your hands.
- Heat food (at 85°C to 90°C in the center of food for 90 seconds or more).
- Sterilize by sodium hypochlorite or chlorous acid water or heating.
- Prevent secondary infection from the feces or vomit of a person infected with norovirus.

If you get norovirus

There are currently no antiviral drugs effective against this virus.

For this reason, symptomatic treatment is usually given. Make sure you are well hydrated and nourished.

Saitama Prefecture website: Infections gastroenteritis (norovirus)

<In Japanese>

URL <https://www.pref.saitama.lg.jp/b0701/kansenshou/ityouen.html>

Inquiries: Health Promotion Division

Health Promotion Section Phone: 048-930-7771

Regional Health Section Phone: 048-930-7772

Medical Examination and Disease Prevention Section Phone: 048-930-7773



Notice on Changing of Water Charges

Please note that water charges will be revised from April 1, 2024.

- The water charges will be increased 20 percent on average.
- The billing of water supply will be changed from the system differentiated 'by category of usage (e.g., for Residential use/ for Commercial use)' to 'by water pipe diameter'.



©三郷市 2009

The water supply business is operated not by the taxation but by the water charges from its users. As the water consumption per person per day has been decreasing due to the spread of water-saving devices and other factors, the revenue from the water charge has been decreasing.

The water charges are used to pay the costs to renew water facilities and deliver safe and reliable tap water. As the construction requires a large amount of money, it is a challenge to secure the financial resources for these costs.

We ask for your understanding and cooperation in order to ensure safe and reliable tap water toward the future.

*Please see the website for details.



■ **Misato City official website:** About the Notice on Changing Water Charges

URL https://www.city.misato.lg.jp/soshiki/suido/gyomu/suido_gyomuinfo/9135.html <In Japanese>

URL <https://www.city.misato.lg.jp/soshiki/chiikishinko/shiminkatsudoshien/2/whtasnew/index.html> <in English>



*** Tips to Make Tap Water Taste Better ***

'Hard water' and 'Soft water'



Water that we drink in daily life is categorized into 'hard water' and 'soft water' depending on the amounts of calcium and magnesium content dissolved in water (i.e., hardness).

Water with high level of 'hardness' is called 'hard water', while water with low level of 'hardness' is called 'soft water'; and this hardness affects the taste of water. The water in Misato City is 'soft water'. The taste of 'soft water' is said to be mellow and smooth.

Flavor of water will change how you drink

Cooling is the easiest way to make water taste good. It is said that water is tasty when its temperature is between 10°C and 15°C. Also, if the water is boiled for 5 minutes or longer, it is said to make it taste good as the chlorine odor is almost completely eliminated. (Please be sure to drink up the boiled water as soon as possible because the effect of disinfection disappears after boiling.)

Misato City tap water is safe and reliable to drink as the water quality is tested for many items.

Tap water is economical!

For example, if a commercially available 500ml plastic bottle of water costs 100 yen, you can drink as much as 1,300 liters of tap water at the price (equivalent to 2,600 of 500 ml bottled water).

Tap water is not only inexpensive compared to a bottled water but also environmentally friendly because it can save the energy to produce and transport the products.

Reduce wastes and conserve the environments by filling your own bottle with tap water when you go out!



Inquiries: Operation Division, Department of Waterworks **Phone:** 048-952-7101




Collection of Small Rechargeable Batteries

The number of fire incidents has been increasing at waste treatment facilities caused by electronic appliances containing lithium-ion batteries, in such products as electronic cigarette or mobile batteries, which were collected with other wastes from local collection sites.

Please dispose of your used rechargeable batteries into a **collection box**. The box is placed at Misato City Hall main building as well as at public facilities mentioned below.

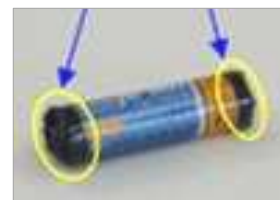
◆Collectable Batteries

Rechargeable batteries (e.g., mobile batteries) discarded from home.

Recycling Symbols			
	Nickel-cadmium battery	Nickel-metal-hydrate battery	Lithium-ion battery
Example of Products with rechargeable battery	<ul style="list-style-type: none"> • Power tool • Cordless phone, etc. 	<ul style="list-style-type: none"> • Digital camera • Power-assisted bicycle • Portable CD/MD music player, etc. 	<ul style="list-style-type: none"> • Video camera • Laptop computer, etc.

◆Notes on disposing of batteries

- *Do not expose the **metal part (positive pole/ negative pole)** as there may be a risk of short-circuit; **cover it with nylon tape**.
- * Dry cell batteries and coin batteries **are not collectable in a collection box for small rechargeable batteries**. (For recycling of dry cell batteries, the **exclusive collection box is placed** in the City. Please put them into the collection box.)



◆Facilities where you can drop off small rechargeable batteries

1F of Misato City Hall main building, Bunka Kaikan (Misato City Culture Hall), Takano Bunka Center (community center), Hikonari-chiku bunka center/ Towa higashi-chiku bunka center/ Takasu-chiku bunka center (district community centers), Community Center, KIBOU-no Sato Koryu Center, Waseda Library, Hokubu Library

Collection box of **small rechargeable batteries**
(Yellow box)



◆Other collection boxes placed at public facilities

Collection box of **dry cell batteries**



Collection box of **used ink cartridges** (White box)



◆Please refer to the following website about recycling of small rechargeable batteries.

■JBRC website <in Japanese>

URL <https://www.jbrc.com/>

■The Japan Containers and Packaging Recycling Association website

URL <https://www.jcpa.or.jp/>

The Year-end and New Year Waste Collection Schedule

will be posted on Misato City official website [English page]

URL

<https://www.city.misato.lg.jp/soshiki/chiikishinko/shiminkatsudoshien/2/whtasnew/index>



Inquiries: Clean Environment Section, Environmental Sustainability Division **Phone:** 048-930-7718

Administrative Information (From November 2023 to January 2024)

Industrial Festa

~Commercial and Industrial Festival
and Agricultural Festival~



A major annual autumn event that hosts the Commerce and Industry Festival and the Agriculture Festival at the same time.

At the Commerce and Industry Festival, we will hold a fun lottery, sell products from friendship cities, and hold food booths.

The agricultural festival will feature a fair and sale of locally grown vegetables and musical performances. These events are expected to attract a large number of visitors.

■Date and Time

Saturday, Nov. 18, 2023 from 10:00 a.m. to 4:00 p.m.

Sunday, Nov. 19, 2023 from 10:00 a.m. to 3:00 p.m.

■Venue

Citizens' Square of Misato City Hall/ Kinrosha
Taiikukan (Gymnasium for Working Citizens)/
Seishonen Home (Youth Center) etc.



■Commercial and Industrial Festival

Inquiries: Misato-shi Shokokai

(Misato City Society of Commerce and Industry)

Phone: 048-952-1231

[URL https://www.3310.biz/topics](https://www.3310.biz/topics)



■Agricultural Festival

Inquiries: Agriculture Promotion Division

Phone: 048-930-7722

[URL https://www.city.misato.lg.jp/soshiki/chiikishinko/nogyoshinko/index.html](https://www.city.misato.lg.jp/soshiki/chiikishinko/nogyoshinko/index.html) <In Japanese>

Please see our website for the latest information.

Information on the Year-end and New Year service of Resident Affairs Division

Misato City Hall will be closed from Friday, December 29, 2023 to Wednesday, January 3, 2024.

◆Notification of Family Register such as registration of birth or marriage.

During the closing period, the guard office at the City Hall accepts your notification for 24 hours a day. The document will be processed on Thursday, January 4, 2024. Please note that you may be asked to come to City Hall to make corrections if your documents are found incomplete.

Inquiries: Resident Affairs Division Family Registration Phone: 048-930-7700

Residents' Registration Phone: 048-930-7701

[URL https://www.city.misato.lg.jp/soshiki/shiminseikatsu/shimin/index.html](https://www.city.misato.lg.jp/soshiki/shiminseikatsu/shimin/index.html) <In Japanese>



The annual fire brigade's New Year ceremony will be held. You can see special performance by the firefighters, fire engines on display, Kiyari (work song for carrying heavy logs) and Hashigo-nori (acrobatic ride atop ladders) by Misato Tobi Association members (scaffolders), etc.

■Date and Time: Sunday, January 7, 2024
From 10:00 a.m.

■Venue: Bunka Kaikan
(Misato City Culture Hall)

* The road in front of the Culture Hall will be closed from 9:00 a.m. to 1:00 p.m.

Activities and times may change.

The content and time of the event may change.

■Inquiries: Misato City Fire Department

Phone: 048-952-3122

[URL https://www.city.misato.lg.jp/soshiki/syobo/shobohonbu/shobosoumu/index.htm](https://www.city.misato.lg.jp/soshiki/syobo/shobohonbu/shobosoumu/index.htm) <In Japanese>



Misato City Fire Brigade's New Year Ceremony



BULLETIN BOARD

From November 2023 to January 2024

Illuminations in Misato City

Niodori Park Illumination

Please come and enjoy the fantastic atmosphere based on blue and white lights.

Date and Time: From Monday, November 27, 2023 to Thursday, February 29, 2024

From 5:00 p.m. to 10:00 p.m.

Venue: Niodori Park

(In front of Misato-chuo Station, Tsukuba Express Line)

Inquiries: Management Section,
Park and Greenery Division

Phone: 048-930-7745

URL https://www.city.misato.lg.jp/soshiki/machizukuri_suishin/midorikoen/index.html

<In Japanese>



Misato Illumination 2023

Illuminations are the year-end and New Year's tradition of JR Misato Station.

Vivid illuminations around the clock tower wrap the winter sky.

Date and Time:

From Saturday, December 2, 2023
to Thursday, March 14, 2024

From 5:00 p.m. to 10:30 p.m.

Venue: Station Plazas in front of
Misato Station on the JR Musashino
Line

Inquiries: Misato-shi Shokokai
(Misato City Society of
Commerce and Industry)

Phone: 048-952-1231

URL <https://www.3310.biz/topics>

<In Japanese>



● Bulletin board for all readers ●

This is a place for you to post your messages. However, we will not place any commercial, political, religious or job-seeking matters. Please use here.

● Issued by ●

Assistance for Citizens' Activity Division, Misato City Hall
Address: 648-1 Hanawada, Misato City, Saitama Pref.,
341-8501

Phone: 048-953-1111 (ext. 2265)

Email: shien@city.misato.lg.jp

● MISATO VIEW Distribution ●

If you would like to receive this publication periodically for free, please call us at **048-953-1111 (ext. 2265)**.

English-speaking staff can help you between 9:00 a.m. to noon and 1:00 p.m. to 4:00 p.m. from Monday through Friday.

Misato City has official website in English.

Please check the latest information through the website. Access the URL or scan the 2D Barcode:

<https://www.city.misato.lg.jp/soshiki/chiikishinko/shiminkatsudoshien/2/index.html>



The next *MISATO VIEW* will be issued in February, 2024