



三郷市キャラクター「かいちゃん」ペーパークラフト

組立ての順番 ① ~ ⑦

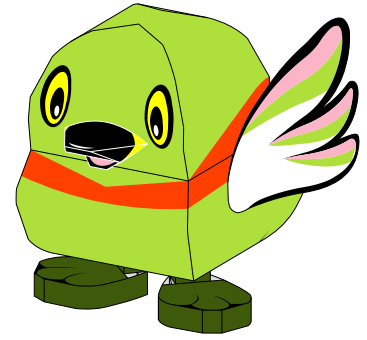
部品の番号 ① ~ ⑱

接着の順番 ① ~ ⑤

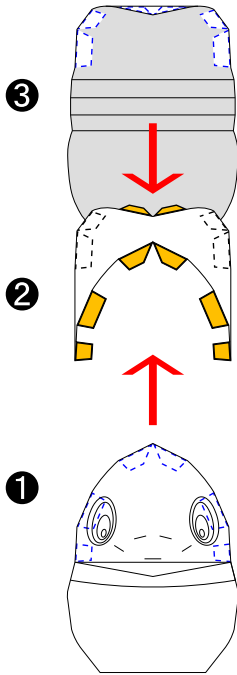
のりしろ   

→ 取り付けの順番

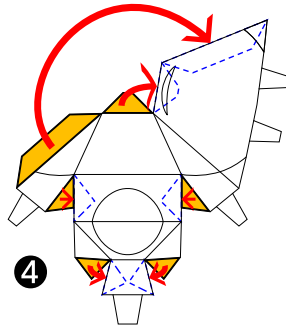
→ 接着の方向



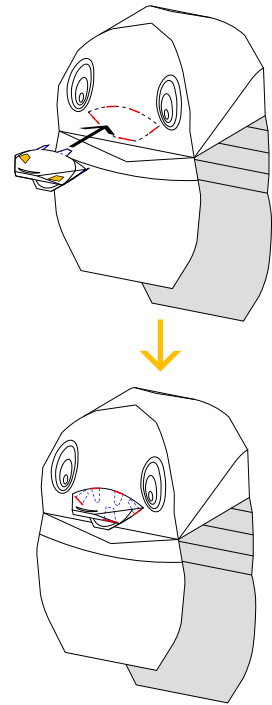
①



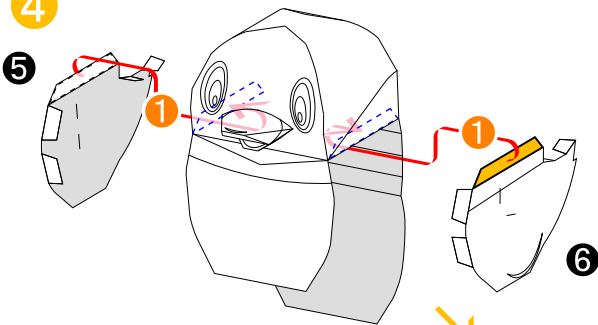
②



③

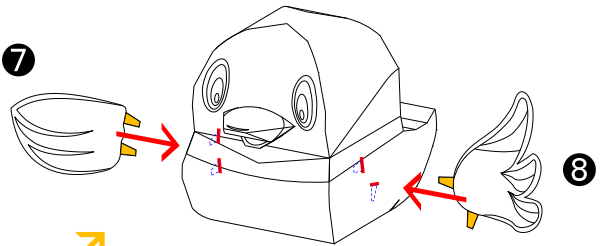


④



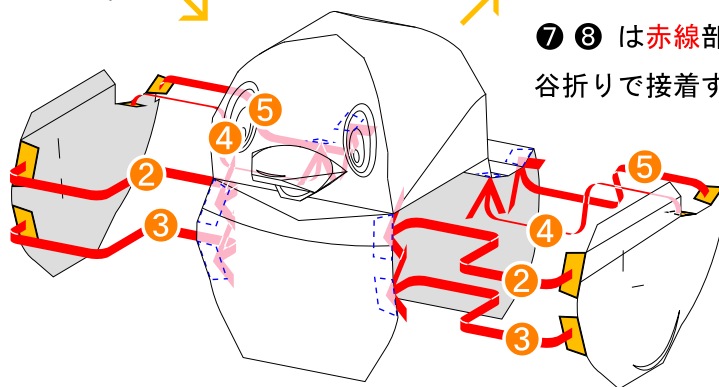
赤線部分にのりしろを通し内側に折り曲げて接着する

⑦



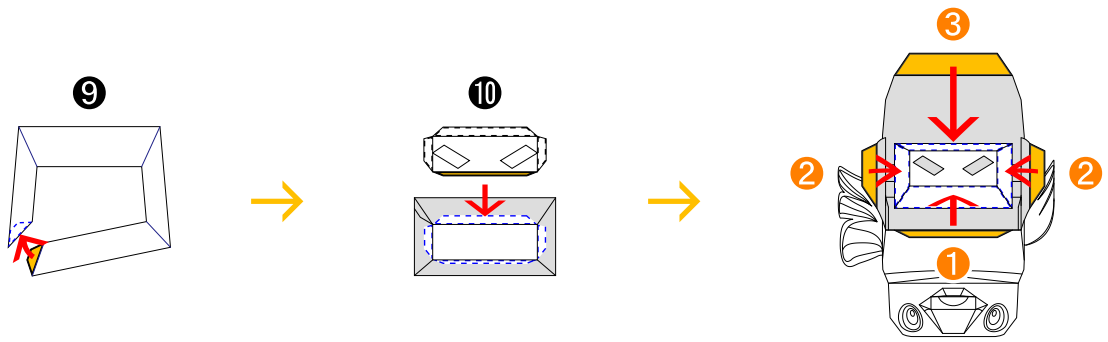
⑧

⑦ ⑧ は赤線部分にのりしろを通し谷折りで接着する



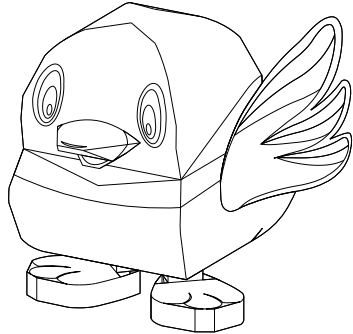
(1)

5

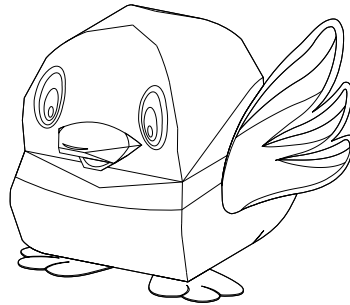


6

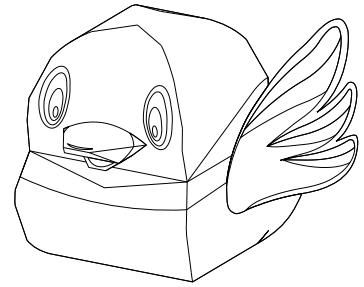
※A, B, Cタイプどちらかの足を選ぶ



(Aタイプ)

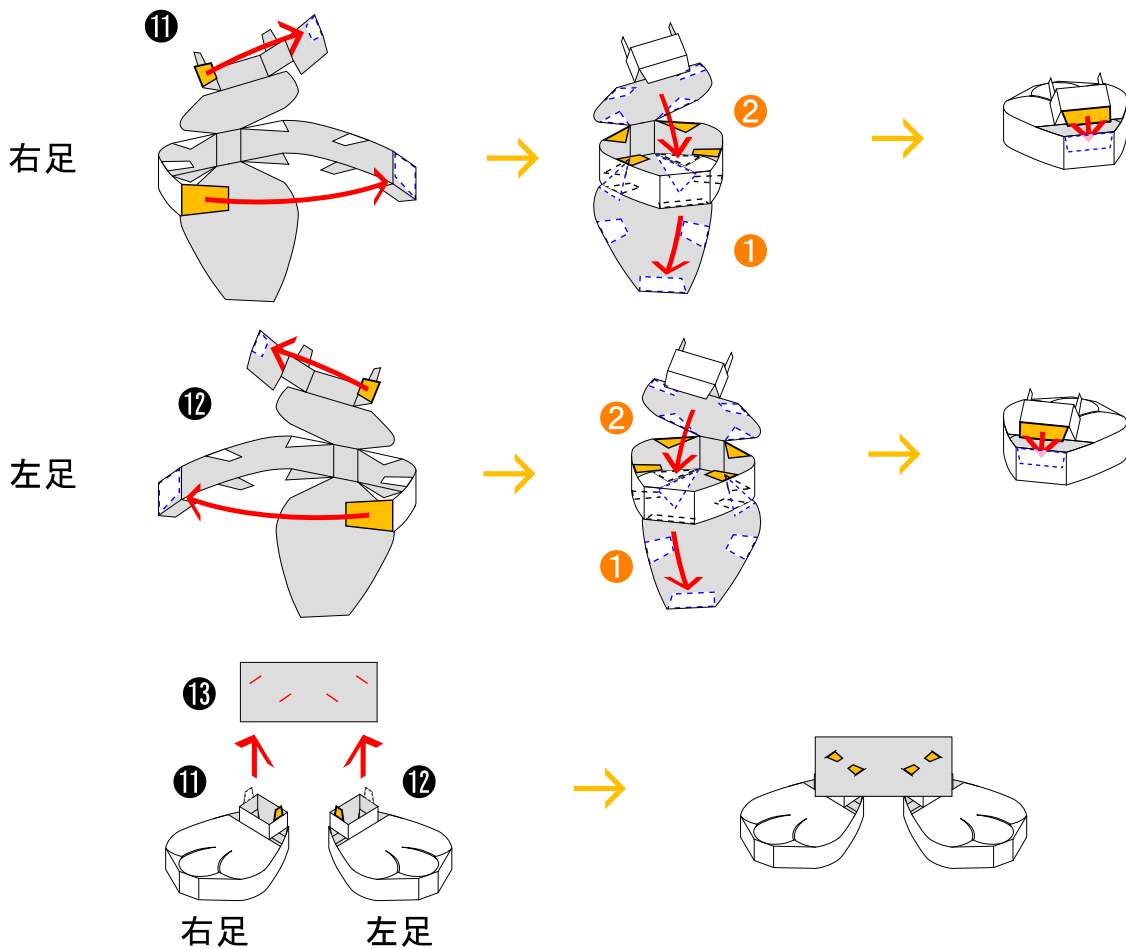


(Bタイプ)



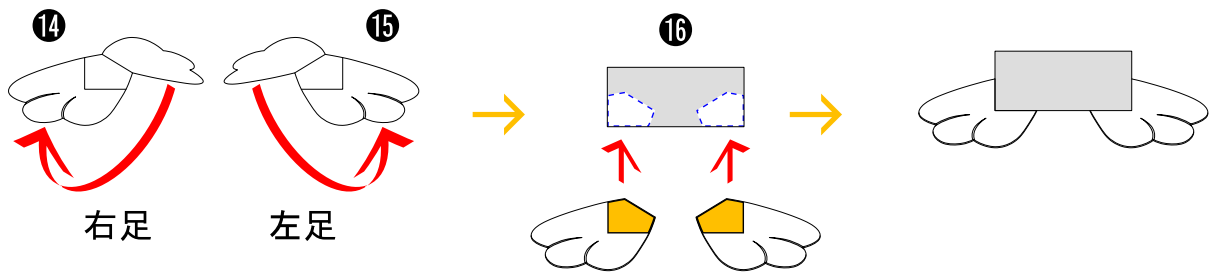
(Cタイプ)

(Aタイプ)

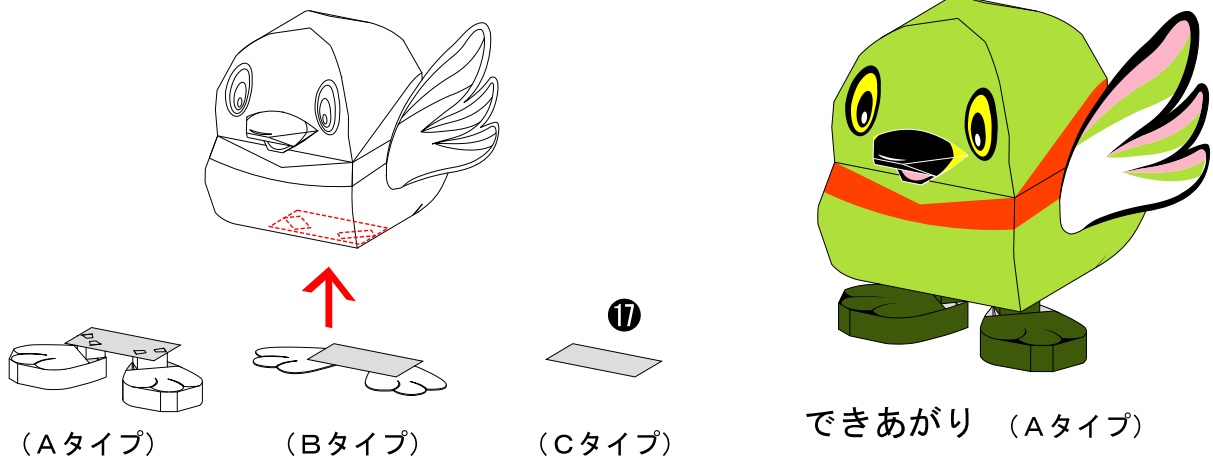


赤線部分にのりしろを通し内側に折り曲げて接着する

(Bタイプ)



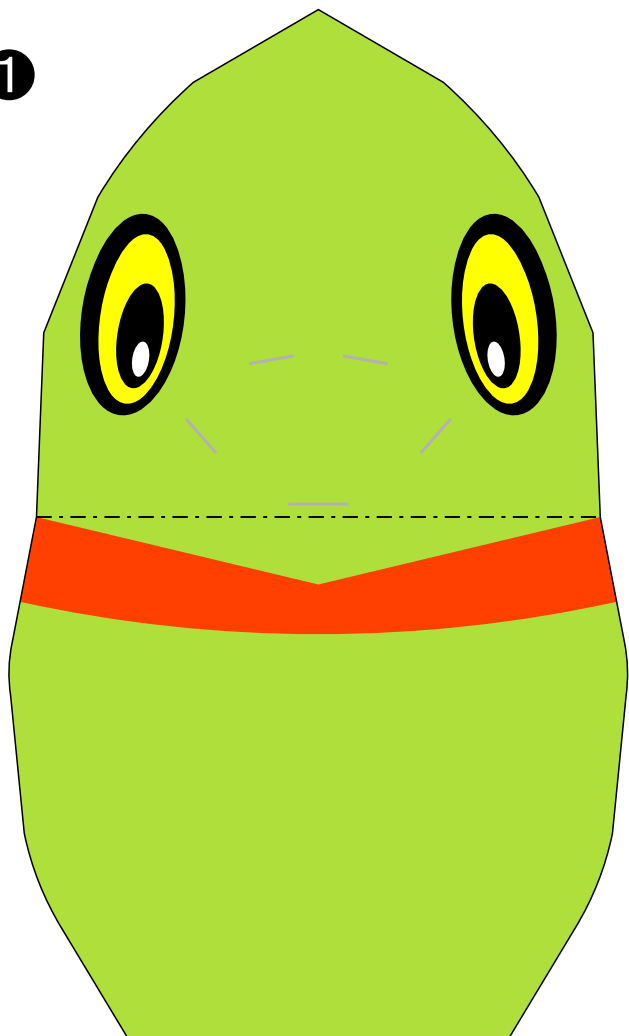
7



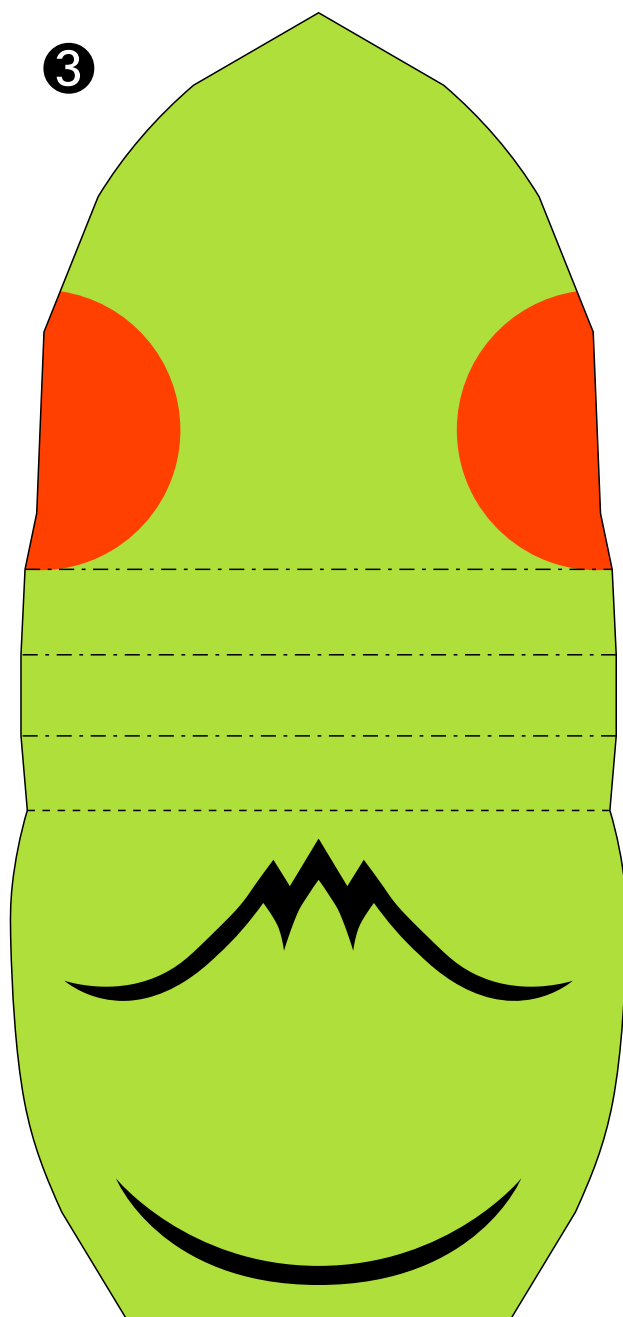
A, B, Cタイプどちらかを点線
部分に接着する

- きりとり ———
- きりこみ ———
- やまおり - - - - -
- たにおり - - - - -

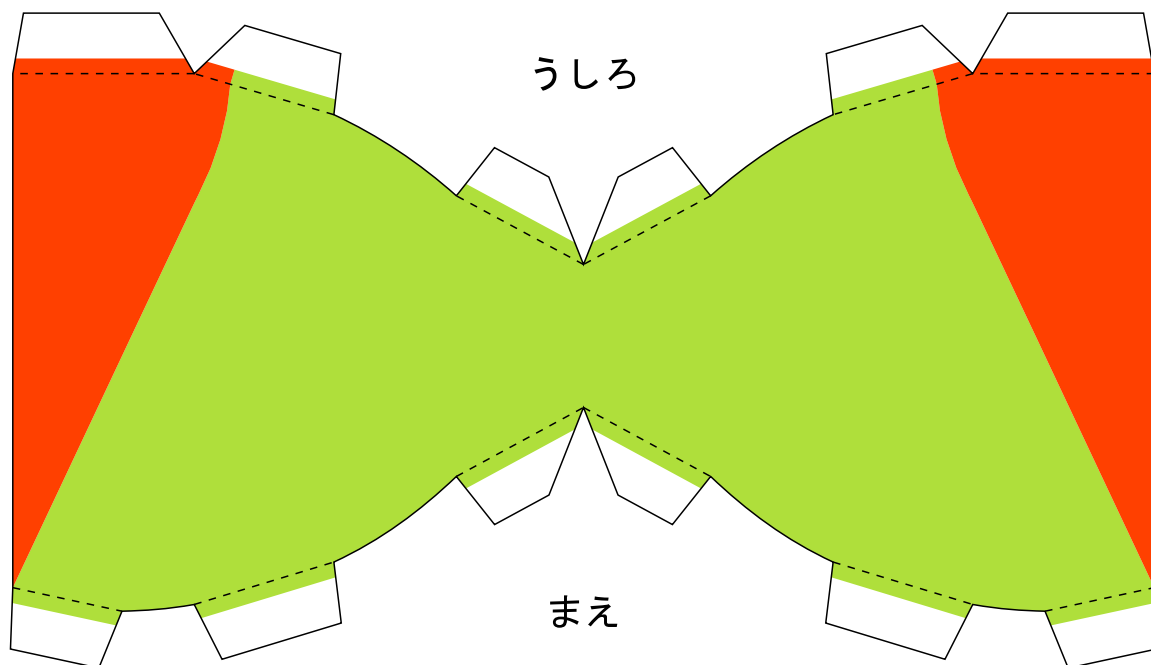
1



3



2

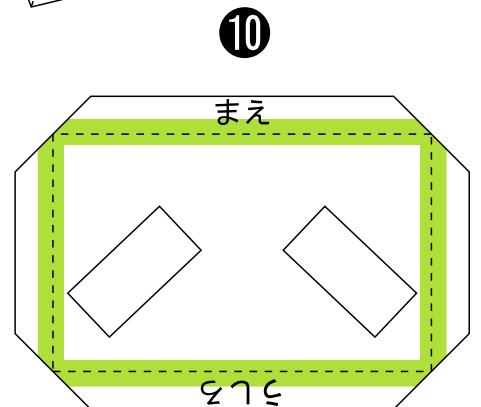
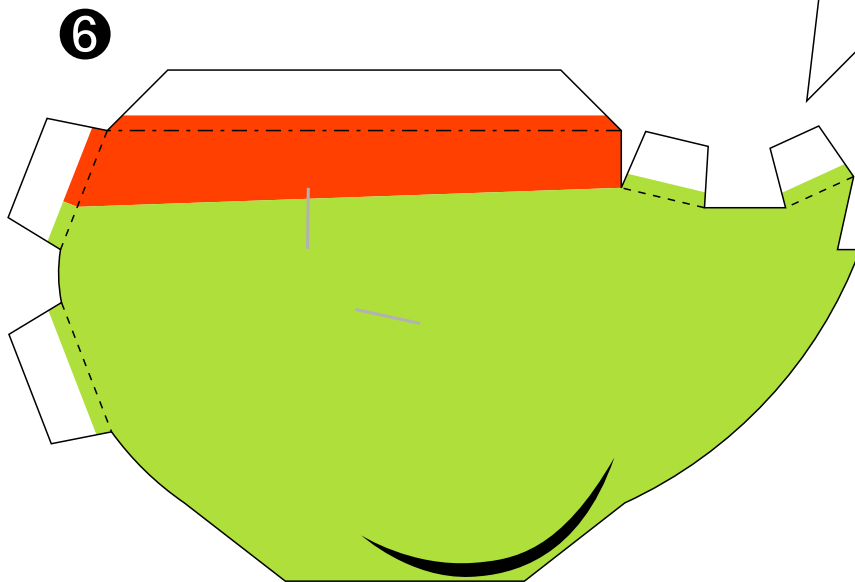
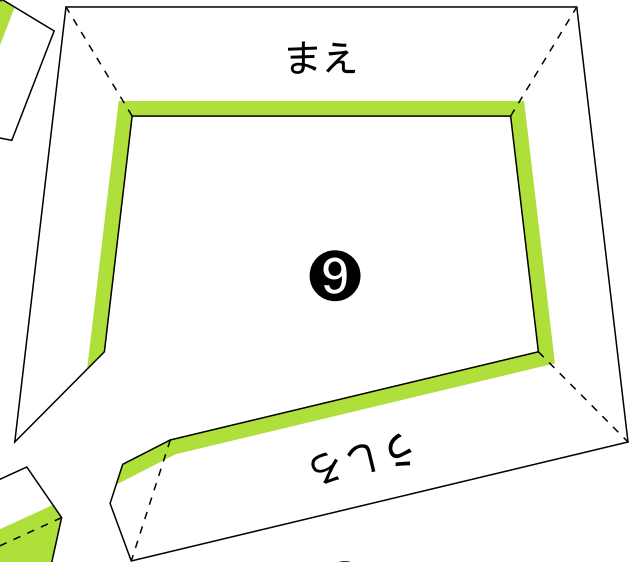
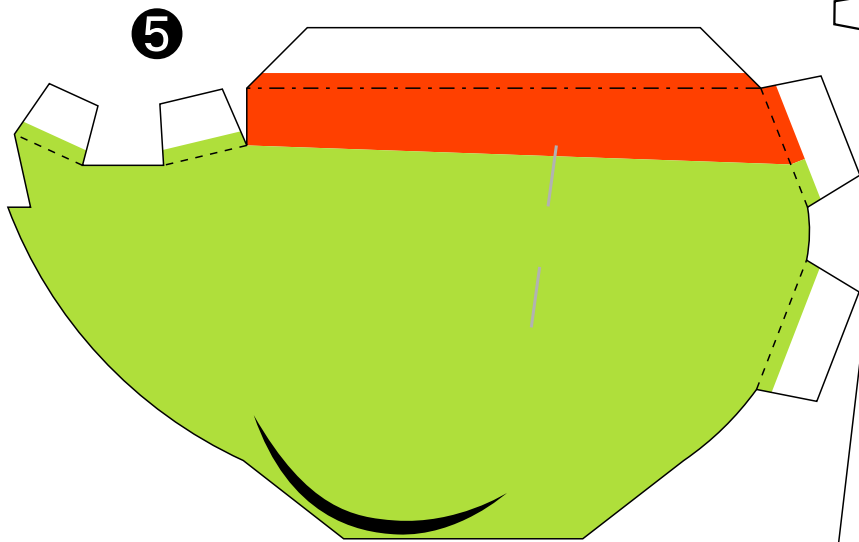
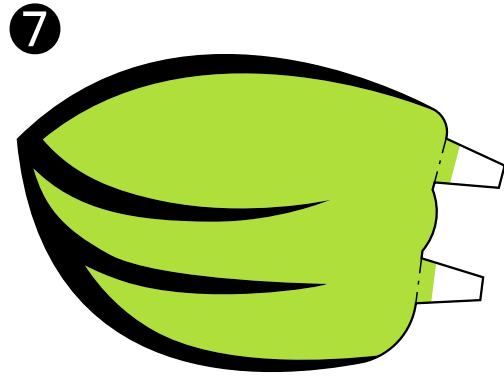
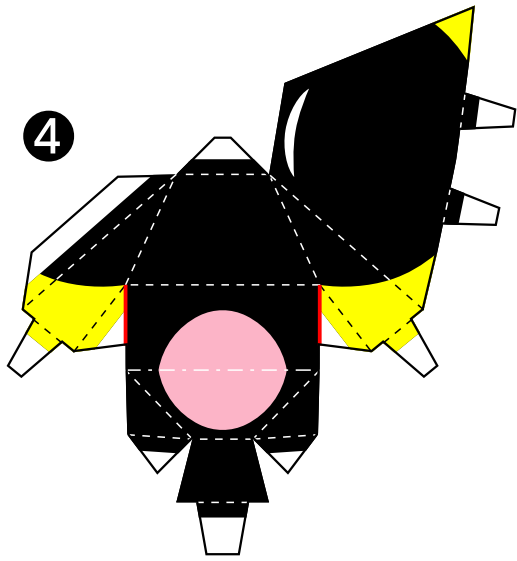


きりとり _____

きりこみ _____

やまおり _____

たにおり _____



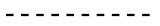
きりとり



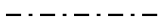
きりこみ



やまおり



たにおり



のりしろ

