

まっふる

≡ 郷

# MISATO



All about Misato

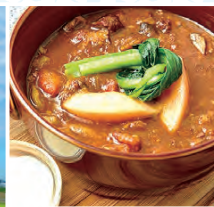
Let's take a walk!

Souvenirs from Misato

Every time you visit,  
you discover something new.  
And the more you come see us,  
the more you'll love Misato!



Misato  
City Map



What's Misato!?

# All about Misato

A convenient city with an excellent transportation network and large-scale shopping and commercial facilities, all alongside relaxing waterfront areas: Misato has it all! Misato is constantly growing, and there's more and more to see and go!



- City Tree: Castanopsis (beech tree)
- City Bird: Little Grebe
- City Flower: Satsuki Azalea

**Misato City Profile**  
Misato sits at the southeastern most edge of Saitama Prefecture. Misato Village was formed from the merging of three villages. The area was designated Misato City in 1972.

**Nature**

**01 An area of lots of water and greenery**  
Misato is surrounded by rivers and ponds on three sides: the Edogawa River to the east, the Nakagawa River to the west, and the Koai Reservoir to the south. The region prospered historically due to the availability of water transport, and the abundance of water also yielded ample crops. Greenways and parks built along the water-side create relaxing and soothing scenic views.

**Shopping**

**02 Huge shopping malls**  
Shin Misato LaLaCity, located near the JR Shim-Misato Station area, and Pialacity near Misato Junction, are large shopping areas that have recently garnered the attention of the public. The area is bustling with lots of people and activity, including not only shopping but also great food and leisure.

Misato City's Mascot Characters  
**Kaichan and Tsubuchan**

These are Misato City's mascots, designed after the Misato city bird, the little grebe. They help us to promote Misato!



Come visit Misato City: there's a lot to do here!

**Access**

**03 Excellent access**

Misato is conveniently accessed from the metropolitan. In addition to the Tsukuba Express Misato-chuo Station, which can be reached as little as 20 minutes from Akihabara Station, Misato is also accessible from the Misato and Shim-Misato Stations on the JR Musashino Line. By car, the area is easily accessed from the Tokyo-Gaikan Expressway, the Joban Expressway, the Shuto Expressway Route 6, etc.



**History**

**04 Take a historical walk through Misato!**

Misato City has 22 city-designated cultural properties. Have a look at these cultural assets and the rich history of Misato at the Kyodo Shiryokan (Historical Museum).

**Kyodo Shiryokan (Historical Museum)**

Misato City Lifelong Learning Division ☎048-930-7759 🕒9:30 a.m.–7:00 p.m. (Closes at 5:00 p.m. on Saturdays, Sundays and holidays) 🗓Mondays and the 4th Thursday of every month (the next day if Mondays/4th Thursdays fall on a holiday) 🆓Free 📺24 spaces 📍Inside the Misato City Waku-Waku Library, 618-1 Yaguchi, Misato City 🚶10-minute walk from the Tsukuba Express Misato-chuo Station 🗺MAP C-3



**Park**

**05 Misato boasts spacious parks**

Misato City is known for its spacious green parks. These parks, such as the Prefectural Misato Park, which has large playground equipment and a barbecue area; Waseda Park, well-known for cherry blossom viewing; and Niodori Park, which offers water gardens, serve as rest-and-relaxation spots for the people of the city.

**06 Fruits & Vegetable**

**You can even try your hand at harvesting fruits and vegetables!**

Misato City has lots of tourist pick-your-own farms, where visitors can pick strawberries, blueberries, tangerines, and salad vegetables. There's nothing like fresh-picked fruit and vegetables, so come out and taste the flavors of the seasons!

**Exercise**

**08 An exercise-inducing environment**

In addition to a full athletics field, Misato also boasts a sports center, a sports park, a cycling road, and more. This is a great place to have fun doing your favorite sports—and to improve your overall health and fitness!



**Book**

**09 Misato, the "Leading City of Book Reading"**

Misato City declared to be one of the "Leading City of Book Reading." The city implements a variety of unique initiatives to promote book-reading, including story-telling sessions, encouraging children to become librarians, and more.



# First, let's venture out!

The following is an overview of a simple sightseeing course for Misato. Take a walk at your own pace, and you might discover some incredible things about Misato that you wouldn't have known existed!



## 1 COURSE Misato Walk

# An afternoon sightseeing course on the JR Line!

# Walk-and-eat!

Misato Station on the JR Musashino Line is the oldest station in the city. This area was developed as a residential district at a relatively early stage. Take a walk to sample some of the great food available here.

The park is known for excellent cherry-blossom viewing in spring.

### START JR Misato Station

## 01 A great café lunch for meat lovers

### Cafe puku

This restaurant purchases the best quality meat, offering great meat dishes for true meat lovers! The owner recommends the "Cafe puku's meat combination meal," which includes hanging tender steak at a reasonable price compared to Tokyo.

☎048-954-8788 🕒10:00 a.m.–3:00 p.m., 6:00 p.m.–10:00 p.m. (8:00 a.m.–3:00 p.m. on Saturdays, Sundays and holidays) 📍Tuesdays and 1st and 3rd Wednesdays 📺1 space 📍1-14-1 Waseda, Misato City 🚶6-minute walk from JR Misato Station

MAP C-2

Brooklyn-style red brick and black signage



Cafe puku's meat combination meal (includes miso soup and rice) ¥2,200



The tender roast pork on rice is a favorite! ¥1,350



We recommend the coffee!

lwaki-san, owner



6-minute walk

## 02 Take a little break at a favorite spot for locals!

### Waseda Park

This park is located adjacent to the Misato City Culture Hall. Known for excellent cherry-blossom viewing, it is also equipped with tennis courts and playground equipment. There's even an outdoor pool open during the summer. Many parents bring their kids here, creating a lively atmosphere.

📍90 spaces 🕒4-4 Waseda, Misato City 🚶10-minute walk from JR Misato Station

MAP C-2



## 03 Greet the local deity at the shrine

### Tango Inari Shrine

This old temple, built in 1786, is dedicated to the god Ukanomitama. This temple is well-known to the local people, drawing many visitors for the traditional first visit to the shrine each New Year (*hatsumode*).

📍None 🕒8-17-8 Waseda, Misato City 🚶7 minutes by the "Waseda Loop" bus from JR Misato Station. Get off at "Uguisu Park Iriguchi" and walk 4 minutes.

MAP C-1



Meet a pair of comical stone guardian foxes

12-minute walk

## 04 Try a unique experience

### Sabo Hoshō

The "Hoshō set," which includes portable clay cooking equipment, is a popular bake-your-own-*senbei* item. Bake until you get the distinctive aroma, and then coat with soy sauce using the special brush. This way, you can make *senbei* rice crackers exactly how you like them!

☎048-958-5587 🕒10:00 a.m.–7:00 p.m. 📍Wednesdays 📍None 🕒4-6-9 Waseda, Misato City 🚶10-minute walk from JR Misato Station

MAP C-2



Hoshō set (4 *senbei* crackers, Japanese tea, and *wagashi* Japanese sweets) ¥880

Senbei you bake yourself tastes great!

Ms. Tsukamoto, the shop owner

## 05 The wafting aroma of wheat

### Ru-Honoka

The method of baking at this bakery serves to maintain both the flavor and aroma of the ingredients. One of the popular items is an aromatic bread used domestic wheat. The shop offers some 60 varieties of bread, including standard baguettes and sliced bread, as well as limited-edition items available only on certain days or during certain seasons.

☎048-958-0081 📍Please check the website 📍Sundays, Mondays, and some irregular days 📍1 space 🕒2-3-7 Waseda, Misato City 🚶4-minute walk from JR Misato Station

MAP C-2



From left: Fig ¥226, Pear ¥313, Cream bread ¥194, Baguette ¥270

### GOAL JR Misato Station



## 01 A relaxing environment in an urban setting

### Niodori Park

This park is situated in front of Misato-chuo Station. There is a stage at the waterside area, where "misato style," an event including jazz performances and food stalls, is held during the summer. This park is well-known as a venue for many events.

📍None 🕒1-10-5 Chuo, Misato City 🚶Close to the Tsukuba Express Misato-chuo Station

MAP C-4



The Niodori Park Bridge connects the area with the river flowing into the park

The cherry blossoms are in bloom from late-March through mid-April. The best time to view *satsuki* azaleas and azaleas is in June.



## 03 Selected amongst Japan's top 100 waterside paths

### Nigoohan-Yosui Green Way

The greenway stretches 1.6 kilometers from the Misato Discharge Channel. The banks of the channel are lined with *somei-yoshino* cherry trees, azaleas, as well as *satsuki* azaleas, which are Misato's city flower. Take a walk along this area and stop for a rest on a bench or at an arbor.

📍Junction of the southern side of the Nigoohan Bridge to the Shimo-Daini Obagawa River

MAP C-4

Take a walk along the waterside!

Take an extra detour...

### Shimo-Daini Obagawa River

In the southern part of Misato City, there is a waterside promenade featuring scenic views of water and greenery alongside the Daini Obagawa River. We recommend heading further west to the Lock Bridge, a picturesque arched brick structure.

📍Junction of the area to the southwest of the Hatchobori Bridge and the Obagawa River

MAP B-5



The waterside promenade is lined with flowers and hydrophyte plants.

## 2 COURSE Misato Walk

A sightseeing course by the Tsukuba Express: start in the morning!

# Take a walk along the waterside!

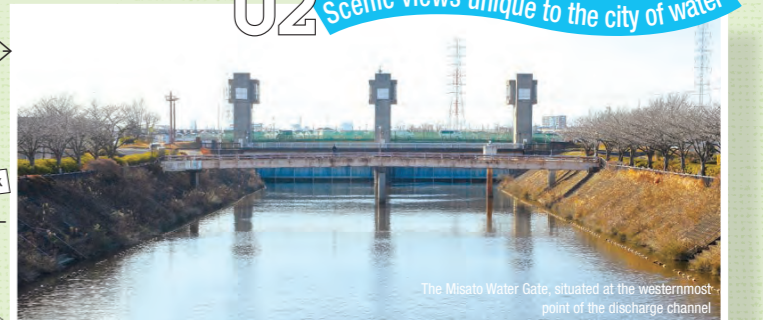
### START

Tsukuba Express Misato-chuo Station

A quick walk

This is a rigorous walking course from Tsukuba Express Misato-chuo Station. It takes you around waterways and greenways—scenic views unique to Misato City.

## 02 Scenic views unique to the city of water



The Misato Water Gate, situated at the westernmost point of the discharge channel

### Misato Discharge Channel

📍Misato Water Gate to Misato Drainage Station

MAP C-4

This discharge channel stretches approximately 1.5 kilometers, connecting the Edogawa River and Nakagawa River crossing Misato City from east to west. This man-made channel, constructed in 1973 as part of initiatives to limit flood damage, is currently counted amongst the main scenic views of Misato City. It's a great place to see cherry blossoms in spring!

## 04 The search for souvenirs that everybody will love!



Misato Yuhodo, local specialty of Misato City ¥155 each

## 05 Enjoy delicious Italian dishes that truly bring out the flavors of the ingredients

### La Luce Misato Togasaki

The menu, featuring elements of French food based in Italian cuisine, is very popular. At this restaurant, the preliminary preparations are meticulously made, and no additives are used. The result is that the inherent flavors of the original ingredients are enhanced.

☎070-1180-0338 🕒11:30 a.m.–2:30 p.m., 6:00 p.m.–11:00 p.m. (courses only for both lunch and dinner, reservations required) 📍Mondays 📍2 spaces 🕒3-87-3 Togasaki, Misato City 🚶8 minutes by bus from Tsukuba Express Misato-chuo Station bound for Kanamachi Station. Get off at "Togasaki Elementary School Mae" and walk 3 minutes.

MAP B-5



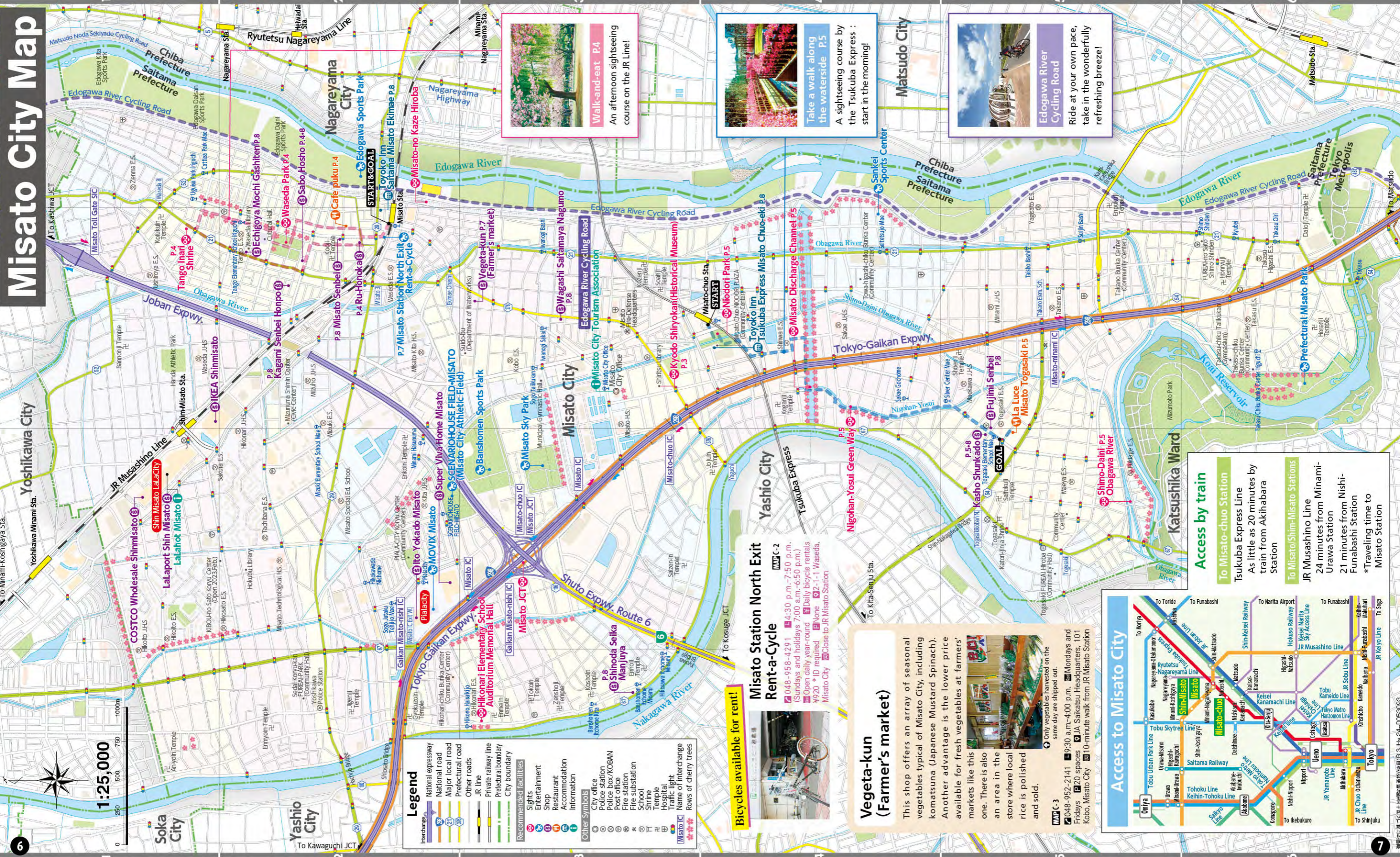
Lunch menu options include meat and fish.

Mr. Inoue, owner of the restaurant

Lunch of the day: spaghetti with eggplant in tomato sauce

### GOAL "Togasaki Elementary School Mae" bus stop

# Misato City Map



### Legend

Interchange	National expressway
Road	National road
	Major local road
	Prefectural road
	Other roads
Private railway line	Private railway line
Prefectural boundary	Prefectural boundary
City boundary	City boundary
Recommended facilities	
Sights	City office
	Police station
	Police box/KOBAN
	Post office
	Fire station
	Fire substation
	School
	Shrine
	Temple
	Hospital
	Traffic light
	Name of interchange
Misato IC	Rows of cherry trees

**Bicycles available for rent!**



**Misato Station North Exit Rent-a-Cycle**  
 ☎ 048-958-4291 ☎ 4:30 p.m.-7:50 p.m. (Sundays and holidays 7:00 a.m.-6:50 p.m.)  
 ☎ Open daily year-round ☎ Daily bicycle rentals ¥920 \*ID required ☎ None ☎ 2-1-1 Waseda, Misato City ☎ Close to JR Misato Station

## Vegeta-kun (Farmer's market)

This shop offers an array of seasonal vegetables typical of Misato City, including komatsuna (Japanese Mustard Spinach). Another advantage is the lower price available for fresh vegetables at farmers' markets like this one. There is also an area in the store where local rice is polished and sold.



☎ Only vegetables harvested on the same day are shipped out.  
 ☎ 048-952-2141 ☎ 9:30 a.m.-4:00 p.m. Mondays and Fridays ☎ 20 spaces ☎ JA Saikatsu Headquarters, 101 Kobo, Misato City ☎ 10-minute walk from JR Misato Station

## Access to Misato City



## Access by train

- To Misato-chuo Station**  
Tsukuba Express Line  
As little as 20 minutes by train from Akihabara Station
- To Misato/Shim-Misato Stations**  
JR Musashino Line  
24 minutes from Minami-Urawa Station  
21 minutes from Nishi-Funabashi Station  
\*Traveling time to Misato Station



**Walk-and-eat P.4**  
An afternoon sightseeing course on the JR Line!



**Take a walk along the waterside P.5**  
A sightseeing course by the Tsukuba Express: start in the morning!



**Edogawa River Cycling Road**  
Ride at your own pace, take in the wonderfully refreshing breeze!

# NIODORI brand

"Niodori" refers to the city bird, in English the "little grebe." Since the first sake product came out under the name of NIODORI, there have been other products carrying the same name. You must give it a try!

Misato limited edition

## NIODORI raw unprocessed Sake

720ml ¥2,000

This is NIODORI's unprocessed sake version. It is characterized by a slightly higher alcohol content and a richer aroma.



Misato limited edition

## NIODORI special pure Sake

720ml ¥1,500

This sake has a wonderful aroma and robust flavor, plus a somewhat dry finish. It's a perfect match for just about any cuisine!

## NIODORI AMAZAKE (Non-alcoholic sweet sake)

180g ¥250

This rice malt non-alcoholic sweet sake is made from both rice and rice malt. Its naturally sweet flavor, which is no sugar added, make it palatable for everyone.



## NIODORI Sake Manju

10 pieces ¥864

These steamed buns, filled with refreshingly smooth bean paste, are characterized by an elegant sake aroma and a pleasantly-chewy texture.

### Wagashi Saitamaya Nagumo

☎ 048-952-4611  
📍 5-26-4 Chuo, Misato City  
MAP C-3



## NIODORI Sake Jelly

3 pieces ¥750

These treats feature a wonderfully smooth texture, plus a delicate sweetness and the pleasant aroma of NIODORI Sake.

### Kasho Shunkado

☎ 048-956-3640  
📍 1-561-3 Togasaki, Misato City  
MAP B-5

<These can be purchased at liquor stores and other locations in the city.>

## Mustard Spinach Senbei (Rice Crackers)

Calcium-rich komatsuna mustard spinach are kneaded into the dough, which is then meticulously roasted to arrive at the finished product: delicious rice crackers! There are a variety of senbei shops in town, each of which have their own original flavor.

A satisfying hard texture

Elegant with a distinct aroma

Crispy, crunchy and aromatic

Crispy and aromatic



6 pieces ¥580



8 pieces ¥560



6 pieces ¥324



6 pieces ¥356

### Sabo Hoshō

☎ 048-958-5587  
📍 4-6-9 Waseda, Misato City  
MAP C-2

### Misato Senbei

☎ 048-958-5775  
📍 2-17-11 Waseda, Misato City  
MAP C-2

### Fujimi Senbei

☎ 048-955-8090  
📍 3-50-6 Togasaki, Misato City  
MAP C-5

### Kagami Senbei Honpo

☎ 048-957-5450  
📍 4-17-10 Waseda, Misato City  
MAP C-2

## Dango-style dumplings

These dumplings are made with sticky rice fresh-steamed every morning. They have a chewy texture, yet are soft and smooth at the same time. ¥118 each.

### Echigoya Mochi Gashiten

☎ 048-957-2323  
📍 5-6-28 Waseda, Misato City  
MAP C-2



## Jumbo Dorayaki

The well-known Kannon Dorayaki goes for ¥185 each. The large size, which is filled with sweet bean paste and chestnuts, are ¥1,300 each (¥1,500 in a box).

### Shinoda Seika Manjuya

☎ 048-952-6054  
📍 1-48-1 Banshomen, Misato City  
MAP A-3



## Misato City is located here!



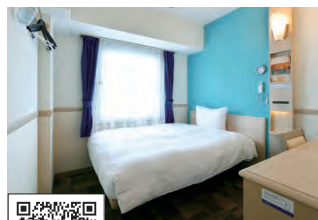
Misato City sits at the southeasternmost part of Saitama Prefecture, on the border of Tokyo and Chiba Prefectures, which is a favorable location both for its convenient access to urban areas and for its natural environment. It is appropriately 20 kilometers in a straight line from Tokyo Station, and within 50 kilometers of Yokohama, Mt. Tsukuba in Ibaraki Prefecture.

Detailed information on accessing Misato City ↗ P7

## Stay overnight at one of these conveniently-located hotels

### Toyoko Inn Tsukuba Express Misato Chuo-eki

An ideal spot to use the Tsukuba Express



MAP C-4

### Toyoko Inn Saitama Misato Ekimae

An ideal location for sightseeing



MAP C-2

Issue date: March 2022

Planning: Misato City  
Tel 048-930-7721

Additional support:

Misato City Tourism Association  
Tel 048-930-7821

Production:

Shobunsha Publications, Inc.

● The content of this magazine is based on information gathered and research conducted from January to March 2022

● Please note that facilities information (address, open hours, regular holidays, providing and fees, inquiries) and event information may be subject to change. Check on this information before visiting.

● Open hours shown in this booklet indicate when the facilities are available to the public for use. For restaurants, this refers to the hours from the time the establishment opens until the last order. For other facilities, it indicates the time the facility opens until doors close.

● Days closed shown in this booklet refer only to regularly-scheduled days and not to the New Year/end-of-year holiday, Golden Week, the Obon holiday, temporary closures, etc.

● Admission and rates include taxes. Admission to each of the facilities is generally the adult per-person rate.

● In general, transportation information indicates the time required by bus or on foot from the nearest station. Keep in mind that these times are estimates, and may differ depending on factors such as the season, the weather, schedule changes, etc.

Note that information on the anti-coronavirus policies and preventive measures at each facility are subject to change. Please check the latest information in advance.