



Misato City

Permanent
Edition

Flood Hazard Map

Be prepared for flood with this map
to save your body and soul



Evacuation Sites/Shelters

Hazard Map/Flood Simulation

When to Evacuate

How to Be Informed of the Evacuation

Communication Channels at Times of Disasters

Things to Keep in Mind at Times of Evacuation

Regular Preparation



Keep this within your reach so that you can use it at a critical moment.

Flood Hazard Map: Preface

We are pleased to publish "Misato City Flood Hazard Map," which has the information of floods that may cause damage to our city.

In order to keep damages from natural disasters to a minimum, it is important to "learn" about disasters, to "be prepared" regularly, and to "take action" at critical moments.

Please read this hazard map and check the route to the evacuation shelter as well as dangerous sites around your home and workplace. Keep this book close to you so that you can read it as soon as the disaster occurs.

Misato City will continue to work on "Our hometown Misato: Making a city that everyone smiles," aiming to make a peaceful and safe city. Thank you for your kind support and cooperation.



Mayor, Misato City
KIZU Masaaki

Contents



Evacuation Sites/Shelters ... 4
Map of Designated Emergency Evacuation Sites/Designated Evacuation Shelters
List of Designated Evacuation Sites/Designated Evacuation Shelters
List of Designated Evacuation Shelters of Voluntary Disaster Prevention Organizations



Hazard Map/Flood Simulation
Misato City & Surrounding Area Flood Hazard Map ... 8
Tone River Flood Hazard Map ... 10
Edo River Flood Hazard Map ... 16
Nakagawa River Flood Hazard Map ... 22
Arakawa River Flood Hazard Map ... 24
Flood Simulation ... 26
Inland Flood Map ... 28



When to Evacuate ... 32
Start Evacuating Before the Flood
"HINAN": Keyword to Danger
Move Away from Misato City Before Heavy Weather
Evacuate Here

How to Be Informed of the Evacuation ... 34
Channels to Be Informed of the Evacuation
Sign up to Be Informed of the Evacuation
Communication Channels at Times of Disasters ... 37
Use Social Network and Disaster Message Board



Things to Keep in Mind at Times of Evacuation ... 38
How to Evacuate Before the Flood



Regular Preparation ... 39
Check the Closest Evacuation Site from Home
Daily Essentials Needed for Disasters
Use Translation Apps to Talk

Flood Hazard Map

Flood Hazard Map: Contents

"Flood" is a disaster caused by water, such as heavy rain, river overflow, pounding of high waves, etc. The Flood Hazard Map aims to minimize the damages from disasters by stating the sites where floods may occur and where to evacuate.

At times of disaster, you will have more opportunities to hear Japanese words that are not used in daily life. Here are some examples of Japanese words often used in terms of "flood."

洪水 (KOZUI) ... An extraordinary increase of river water.

氾濫 (HANRAN) ... A situation where the river water gets full and overflows from the levee.

決壊 (KEKKAI) ... A situation where an extraordinary increase of river water breaks the levee.

内水氾濫 (NAISUI-HANRAN) ... A situation where water of the sewers and drainage canals get full, overflows and causes the submerge of the city in water.

浸水 (SHINSUI) ... A situation where the city submerges in water.

浸水深 (SHINSUI-SHIN) ... The height from the ground surface to the water surface at times when the city submerges in water.

When words like the above are used in news and weather forecasts related to Misato City at times of typhoons and heavy rains, it means that there are high possibilities of danger approaching to our city. Make sure you use the "Flood Hazard Map" in your daily lives to check places and tips to stay safe.

● Misato City & Surrounding Area Flood Hazard Map

A consolidated map of the scope of inundations and inundation heights in Misato City at times of flood in Tone, Edo, Arakawa, and Nakagawa Rivers.

● Hazard maps of Tone, Edo, Nakagawa, and Arakawa Rivers

Separate maps of the scope of inundations and inundation heights in Misato City at times of flood in Tone, Edo, Arakawa, and Nakagawa Rivers.

Assumed Conditions of "Flood"

In the assumed conditions of "flood," those caused by bursts of small rivers and heavy rain beyond assumption are not taken into consideration. Therefore, there may be areas that actually submerge in water even if they are assumed that it will not.

Tone River...Assumed total rainfall in 72 hours in Tone River and Yattajima upstream basins: 491mm

Edo River...Assumed total rainfall in 72 hours in Tone River and Yattajima upstream basins: 491mm

Nakagawa River/Ayase River...Assumed total rainfall in 48 hours in Nakagawa and Ayase River basins: 596mm

Arakawa River...Assumed total rainfall in 72 hours in Arakawa River basin: 632mm

● Inland Flood Map

The inland flood map shows the places where inland flood actually occurred in Misato City between April 2014 and December 2018.

Places where inland flood occurred is based on the reports from the citizens.

「この地図の作成に当たっては、国土地理院長の承認を得て、同院発行の数値地図（国土基本情報）電子国土基本図（地図情報）、数値地図（国土基本情報）電子国土基本図（地名情報）及び基盤地図情報を使用した。（承認番号 平 30 情使、第 979 号）」



Evacuation Sites/ Shelters

Map of Designated Emergency Evacuation Sites/ Designated Evacuation Shelters

Before the flood, check the designated emergency evacuation site and the designated evacuation shelter with your family. Walk the actual evacuation route and check if there are any dangerous spots. Write down such information on the map to help your evacuation.



Designated Evacuation Sites

① ~ ③⑥

A designated evacuation site is the place to gather and spend time until the heavy rain or flood come to an end.

Designated Evacuation Shelters

① ~ ③③

A designated evacuation shelter is the place where people whose houses are broken or washed away gather and live.

List of Designated Evacuation Sites/Designated Evacuation Shelters

	Name	Intended Extraordinary Phenomena				Address	Phone
		Flood	Earthquake	Massive Fire	Inundation		
1	Waseda Elementary School	○	○	○	○	3-2-1 Misato	048-952-4151
2	Yagisato Elementary School	○	○	○	○	1-35-1 Takano	048-955-0912
3	Togasaki Elementary School	○	○	○	○	3-76-1 Togasaki	048-955-0913
4	Hikonari Elementary School	○	○	○	○	1-133 Hikonura	048-952-1265
5	Takasu Elementary School	○	○	○	○	2-275 Takasu	048-955-0097
6	Fukiage Elementary School	○	○	○	○	921-1 Yomaki	048-955-5964
7	Sakura Elementary School	○	○	○	○	4-5-16 Hikonari	048-957-5033
8	Takano Elementary School	○	○	○	○	3-211 Takano	048-955-1911
9	Shinwa Elementary School	○	○	○	○	2-28-12 Chuo	048-952-0121
10	Kobo Elementary School	○	○	○	○	88 Motai	048-952-0211
11	Tachibana Elementary School	○	○	○	○	4-3-18 Hikonari	048-957-1266
12	Hikoito Elementary School	○	○	○	○	3-10-23 Hikonari	048-957-0201
13	Maeya Elementary School	○	○	○	○	2-600 Togasaki	048-955-9331
14	Takasu-Higashi Elementary School	○	○	○	○	2-409 Takasu	048-955-7711
15	Hikosato Elementary School	○	○	○	○	3-8-29 Hikonari	048-957-9911
16	Tango Elementary School	○	○	○	○	5-3 Waseda	048-957-1217
17	Zenma Elementary School	○	○	○	○	197-1 Zenma	048-958-1211
18	Mizuki Elementary School	○	○	○	○	1-6-1 Satsukidaira	048-957-1310
19	Ushiroya Elementary School	○	○	○	○	36-3 Ushiroya	048-959-4500
20	Minami Junior High School	○	○	○	○	3-356 Takano	048-955-0550
21	Kita Junior High School	○	○	○	○	2-13-1 Izumi	048-952-5281
22	Sakae Junior High School	○	○	○	○	4-325 Sakae	048-952-1201
23	Hikonari Junior High School	○	○	○	○	4-1-19 Hikonari	048-957-1201
24	Hikoito Junior High School	○	○	○	○	3-14-4 Hikonari	048-957-1215
25	Maekawa Junior High School	○	○	○	○	5-141 Sakae	048-953-4401
26	Waseda Junior High School	○	○	○	○	5-56 Hikonari	048-958-1231
27	Mizuho Junior High School	○	○	○	○	1001 Ohiroto	048-957-3355
28	Mizunuma Shimin Center (civic center)	○	○	○	○	870 Kamihikona	048-950-2277
29	Misato High School	○	○	○	○	620-1 Hanawada	048-953-0021
30	Misatokita High School	○	○	○	○	808 Ohiroto	048-952-0151
31	Misato Technological High School	○	○	○	○	3-325 Hikonari	048-958-2331
32	Misato Special Needs School	○	○	○	○	56 Komagata	048-952-1205
33	Dokkyo Medical University Misato Nursing School	○	○	○	○	3-11-21 Hikonari	048-948-7580
34	Edogawa Riverbed		○	○		Tanakashinden Takasu 4-chome	
35	Banshomen Sports Park		○	○		Banshomen 3-chome	
36	Misato Park		○	○		Takasu 3-chome	



Evacuation Site/ Shelter for Evacuees

List of Designated Evacuation Shelters of Voluntary Disaster Prevention Organizations

A voluntary disaster prevention organization is an organization in which local people play the main role in support of rescue, first aid, and evacuation activities at times of major disasters.

In Misato City, local voluntary disaster prevention organizations decide which designated evacuation shelters to go to at times of disasters.

No.	Voluntary Disaster Prevention Organizations	Designated Shelter for Evacuees
1	Hanta Neighborhood Association	Waseda Junior High School
2	Midori Neighborhood Association	Ushiroya Elementary School Zenma Elementary School
3	Tango-Kami Neighborhood Association	Ushiroya Elementary School Zenma Elementary School Tango Elementary School Waseda Junior High School
4	Tango-Shimo Neighborhood Association	Tango Elementary School
5	Waseda 1-chome Neighborhood Association	Tango Elementary School
6	Waseda Tsutsumi Neighborhood Association	Tango Elementary School Zenma Elementary School
7	Ohirotto Neighborhood Association	Waseda Elementary School Misatokita High School
8	Nizo Neighborhood Association	Tango Elementary School
9	Motai Neighborhood Association	Waseda Elementary School Kobo Elementary School
10	Hokubi Neighborhood Association	Kita Junior High School
11	Kobo-Kami Neighborhood Association	Kobo Elementary School
12	Kobo-Naka Neighborhood Association	Kobo Elementary School
13	Kobo-Shimo Neighborhood Association	Kobo Elementary School
14	Misato 1-chome Neighborhood Association	Waseda Elementary School
15	Misato 2-chome Neighborhood Association	Waseda Elementary School
16	Hikonari 5-chome Neighborhood Association	Waseda Junior High School
17	Efflore Shin-Misato 216 Neighborhood Association	Waseda Junior High School
18	Yanaka Chuo Neighborhood Association	Kobo Elementary School
19	Fine-court La La City Neighborhood Association	Mizunuma Shimin Center (civic center)
20	Misato Waseda Dai-ichi Housing	Tango Elementary School
21	Misato Waseda 3-2	Tango Elementary School
22	Waseda 3-1	Tango Elementary School
23	Misato Waseda Dai-yon Home Management Association	Tango Elementary School
24	Misato Waseda Dai-go Home Management Association	Tango Elementary School
25	Misato Waseda Dai-roku Housing Complex Management Association	Tango Elementary School
26	Misato Waseda Dai-nana Housing Complex Management Association	Ushiroya Elementary School
27	Misato Waseda Dai-kyu Housing Complex Management Association	Zenma Elementary School
28	Misato Waseda Dai-ju Housing Complex	Zenma Elementary School
29	Misato Waseda Dai-juichi Housing Complex	Zenma Elementary School

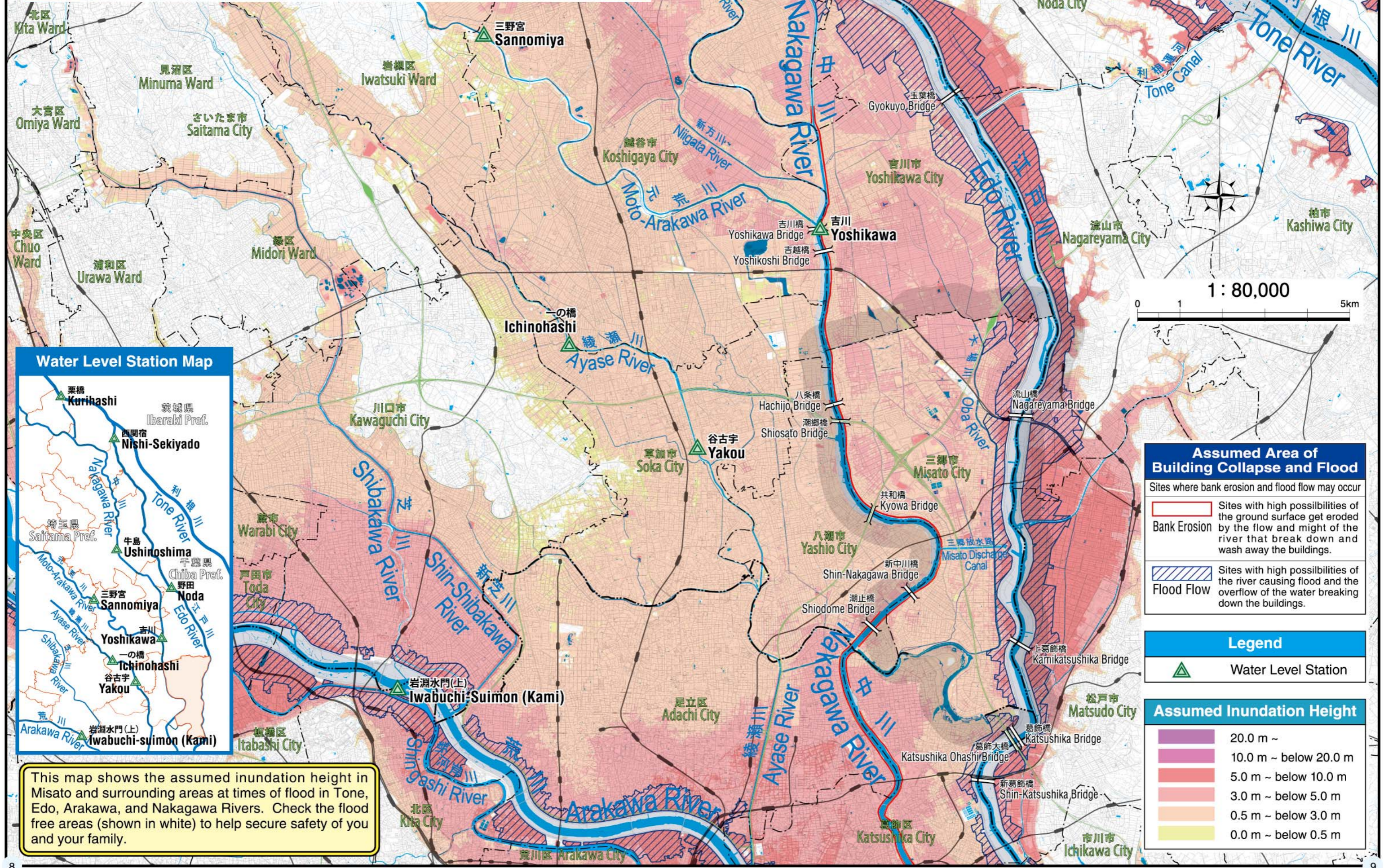
No.	Voluntary Disaster Prevention Organizations	Designated Shelter for Evacuees
30	Misato Waseda 34/59 Neighborhood Association	Ushiroya Elementary School
31	Amity Misato Waseda Housing Complex	Tango Elementary School
32	Credo Misato Waseda	Zenma Elementary School
33	Chateau Bellevue Misato Neighborhood Association	Zenma Elementary School
34	Ichisuke Neighborhood Association	Shinwa Elementary School
35	Shinwa 1-chome Neighborhood Association	Shinwa Elementary School
36	Shinwa 2-chome Neighborhood Association	Shinwa Elementary School
37	Shinwa 3-chome Neighborhood Association	Sakae Junior High School
38	Shinwa 4-chome Neighborhood Association	Sakae Junior High School
39	Shinwa 5-chome Neighborhood Association	Minami Junior High School Sakae Junior High School
40	Takano 1-chome Nagatoro Neighborhood Association	Yagisato Elementary School
41	Takano 1-chome Yagisato Neighborhood Association	Yagisato Elementary School
42	Takano 2-chome Neighborhood Association	Minami Junior High School
43	Takano-Higashi Neighborhood Association	Takano Elementary School Minami Junior High School
44	Takano 3-chome Nishi Neighborhood Association	Minami Junior High School Takano Elementary School
45	Takano 4-chome Neighborhood Association	Takano Elementary School
46	Takano 5-chome Kamakura Neighborhood Association	Takano Elementary School
47	Takano 5-chome Yomaki Neighborhood Association	Takano Elementary School
48	Azumacho-Kami Neighborhood Association	Takasu-Higashi Elementary School
49	Azumacho-Minami Neighborhood Association	Takasu-Higashi Elementary School
50	Takasu 1-chome Kami Neighborhood Association	Takasu-Higashi Elementary School
51	Takasu 1-chome Shimo-Shinden Neighborhood Association	Takasu-Higashi Elementary School
52	Takasu 1-chome Naka Neighborhood Association	Takasu Elementary School Takasu-Higashi Elementary School
53	Takasu 2-chome Hon Neighborhood Association	Takasu-Higashi Elementary School Takasu Elementary School
54	Takasu 2-chome Midori Neighborhood Association	Takasu Elementary School
55	Takasu 3-chome Higashi Neighborhood Association	Takasu Elementary School
56	Takasu 3-chome Mizusato Neighborhood Association	Takasu Elementary School
57	Takasu 4-chome Higashi Neighborhood Association	Takasu-Higashi Elementary School

No.	Voluntary Disaster Prevention Organizations	Designated Shelter for Evacuees
58	Takasu 4-chome Nishi Neighborhood Association	Takasu Elementary School
59	Togasaki 1-chome Kami Neighborhood Association	Maekawa Junior High School
60	Togasaki 1-chome Shimo Neighborhood Association	Togasaki Elementary School
61	Togasaki 2-chome Higashi Neighborhood Association	Maeya Elementary School Togasaki Elementary School
62	Togasaki 2-chome Nishi Neighborhood Association	Togasaki Elementary School
63	Togasaki 2-chome Minami Neighborhood Association	Maeya Elementary School
64	Togasaki 3-chome Kami Neighborhood Association	Togasaki Elementary School
65	Togasaki 3-chome Minami Neighborhood Association	Maeya Elementary School
66	Togasaki 4-chome Neighborhood Association	Fukiage Elementary School
67	Togasaki 5-chome Neighborhood Association	Fukiage Elementary School
68	Togasaki Misato Neighborhood Association	Fukiage Elementary School
69	Togasaki Tsunomachi Neighborhood Association	Fukiage Elementary School
70	Togasaki 6-chome Neighborhood Association	Fukiage Elementary School Maeya Elementary School
71	Togasaki 7-chome Higashi Neighborhood Association	Maeya Elementary School Togasaki Elementary School
72	Togasaki 7-chome Nishi Neighborhood Association	Maeya Elementary School
73	Togasaki 8-chome Kami Neighborhood Association	Togasaki Elementary School
74	Togasaki 8-chome Shimo Neighborhood Association	Togasaki Elementary School
75	Sakae 1-chome Neighborhood Association	Shinwa Elementary School
76	Chuo 2-chome Neighborhood Association	Shinwa Elementary School
77	Sakae 3/4-chome Neighborhood Association	Sakae Junior High School
78	Sakae 5-chome Neighborhood Association	Maekawa Junior High School
79	Yaguchi-Minami Neighborhood Association	Shinwa Elementary School
80	Yaguchi-Kita Neighborhood Association	Misato High School
81	Yaguchi-Nishi Neighborhood Association	Misato High School
82	Hanawada Neighborhood Association	Misato High School
83	Hikoe Neighborhood Association	Misato High School
84	Hikosawa Neighborhood Association	Hikonari Elementary School
85	Banshomen Neighborhood Association	Hikonari Elementary School
86	Kamiguchi Neighborhood Association	Hikonari Elementary School
87	Hikokura Neighborhood Association	Hikonari Elementary School
88	Hikono Neighborhood Association	Hikonari Elementary School
89	Tenjin Neighborhood Association	Hikonari Elementary School
90	Hikokawado Neighborhood Association	Misato Technological High School
91	Kamihikona Neighborhood Association	Misato Technological High School
92	Hikonari 1-chome Neighborhood Association	Hikosato Elementary School

No.	Voluntary Disaster Prevention Organizations	Designated Shelter for Evacuees
93	Hikonari 2-chome Neighborhood Association	Hikosato Elementary School
94	Hikooto Neighborhood Association	Hikoito Elementary School
95	Kamihikona New Town Neighborhood Association	Hikosato Elementary School
96	Uneme Neighborhood Association	Sakura Elementary School
97	Izumi Neighborhood Association	Kita Junior High School
98	The Lions Misato Chuo	Shinwa Elementary School
99	Misato Dai-ichi Jutaku	Hikosato Elementary School
100	Misato Dai-ni Jutaku	Dokkyo Medical University Misato Nursing School
101	Misato Dai-san Jutaku Management Association	Hikoito Junior High School
102	Misato Dai-yon Jutaku Management Association	Dokkyo Medical University Misato Nursing School
103	Misato Dai-roku Jutaku Management Association	Hikoito Elementary School
104	Misato Danchi 1-gaiku Neighborhood Association	Hikonari Junior High School
105	Misato Danchi 2-gaiku	Sakura Elementary School
106	Misato Danchi 3-gaiku	Tachibana Elementary School
107	Misato Danchi 4-gaiku	Tachibana Elementary School
108	Misato Danchi 5-gaiku	Sakura Elementary School
109	Misato Danchi 6-gaiku	Sakura Elementary School
110	Misato Danchi 10-gaiku	Hikosato Elementary School
111	Misato Danchi 11-gaiku Neighborhood Association	Dokkyo Medical University Misato Nursing School
112	Misato Danchi 14-gaiku Neighborhood Association	Hikoito Junior High School
113	Satsukidaira 1-2-1 Neighborhood Association	Mizunuma Shimin Center (civic center)
114	Satsukidaira 1-2-2 Neighborhood Association	Mizunuma Shimin Center (civic center)
115	Satsukidaira 1-3-1 Neighborhood Association	Mizunuma Shimin Center (civic center)
116	Dominance Neighborhood Association	Mizuho Junior High School
117	Satsukidaira 1-4-1 Neighborhood Association	Mizunuma Shimin Center (civic center)
118	Satsukidaira 1-4-2 Neighborhood Association	Mizuki Elementary School
119	Satsukidaira 1-5-1 Neighborhood Association	Mizuki Elementary School
120	Satsukidaira 1-5-2 Neighborhood Association	Mizuki Elementary School
121	Terra West 2-gaiku 1-gokan	Tachibana Elementary School
122	Terra West 2-gaiku 2-gokan	Tachibana Elementary School
123	Satsukidaira 2-3-1 Neighborhood Association	Tachibana Elementary School
124	Satsukidaira 2-3-2 Neighborhood Association	Tachibana Elementary School
125	Towers 1	Mizuki Elementary School
126	Towers 2 Neighborhood Association	Tachibana Elementary School
127	Park Field Misato Terra West 4-gaiku 3-gokan	Tachibana Elementary School
128	Terra West 5-gaiku 1-gokan Neighborhood Association	Mizuki Elementary School
129	Terra West 5-gaiku 2-gokan	Mizuki Elementary School

* List as of December 2018

Misato City & Surrounding Area Flood Hazard Map (Composited Inundation Height of Tone River, Edo River, Arakawa River and Nakagawa River)



Assumed Area of Building Collapse and Flood

Sites where bank erosion and flood flow may occur

- Sites with high possibilities of the ground surface get eroded by the flow and might of the river that break down and wash away the buildings.
- Sites with high possibilities of the river causing flood and the overflow of the water breaking down the buildings.

Legend

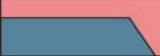



- Water Level Station

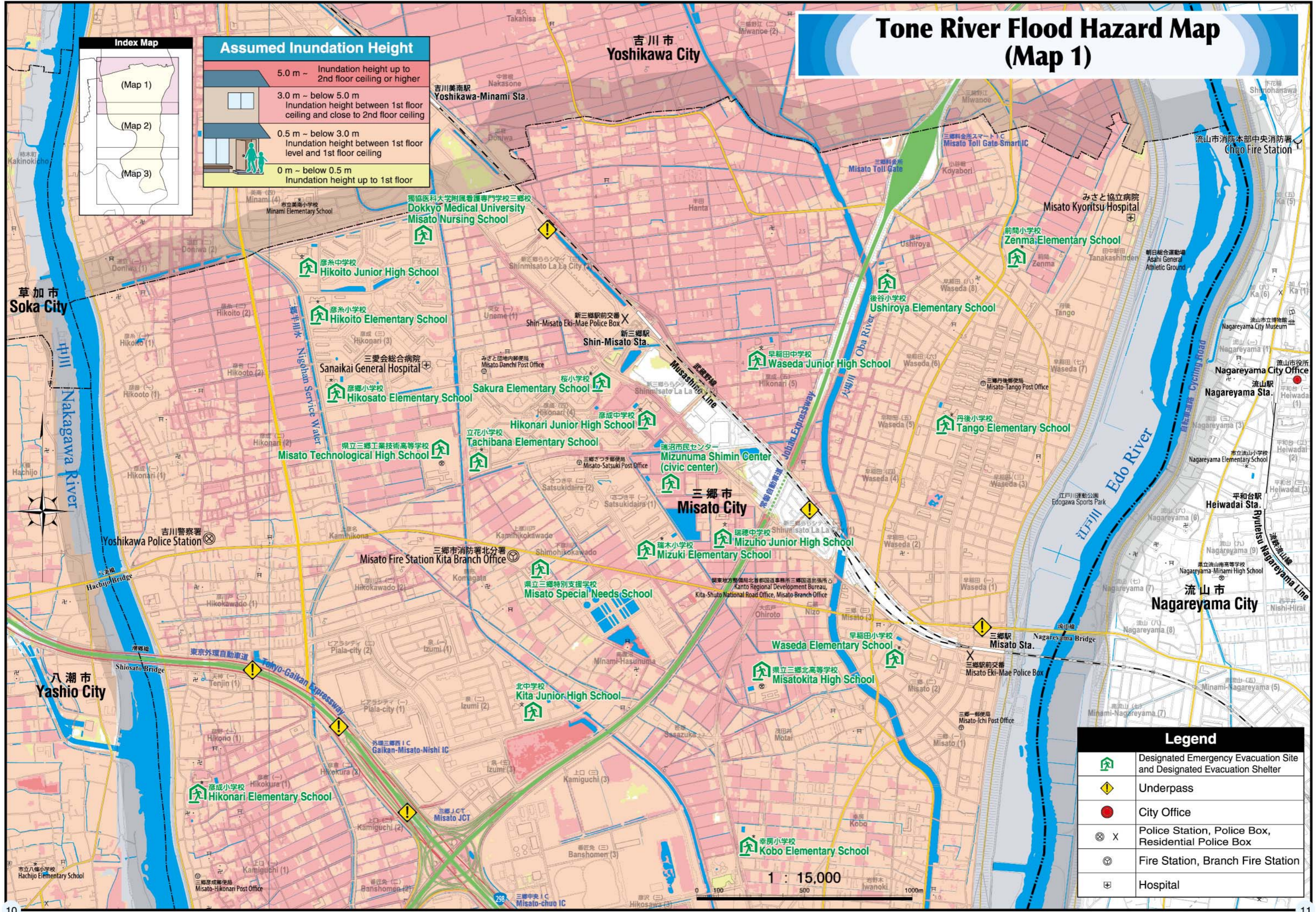
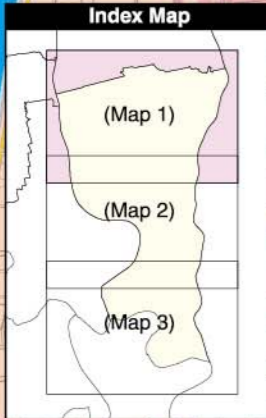
Assumed Inundation Height







- 20.0 m ~
- 10.0 m ~ below 20.0 m
- 5.0 m ~ below 10.0 m
- 3.0 m ~ below 5.0 m
- 0.5 m ~ below 3.0 m
- 0.0 m ~ below 0.5 m

This map shows the assumed inundation height in Misato and surrounding areas at times of flood in Tone, Edo, Arakawa, and Nakagawa Rivers. Check the flood free areas (shown in white) to help secure safety of you and your family.

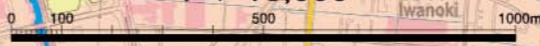
Tone River Flood Hazard Map (Map 1)

Assumed Inundation Height	
	5.0 m ~ Inundation height up to 2nd floor ceiling or higher
	3.0 m ~ below 5.0 m Inundation height between 1st floor ceiling and close to 2nd floor ceiling
	0.5 m ~ below 3.0 m Inundation height between 1st floor level and 1st floor ceiling
	0 m ~ below 0.5 m Inundation height up to 1st floor

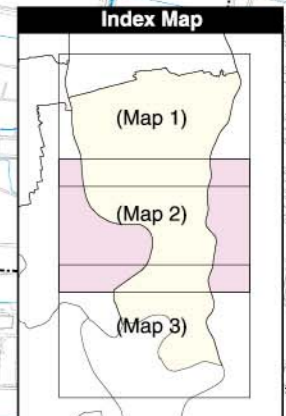
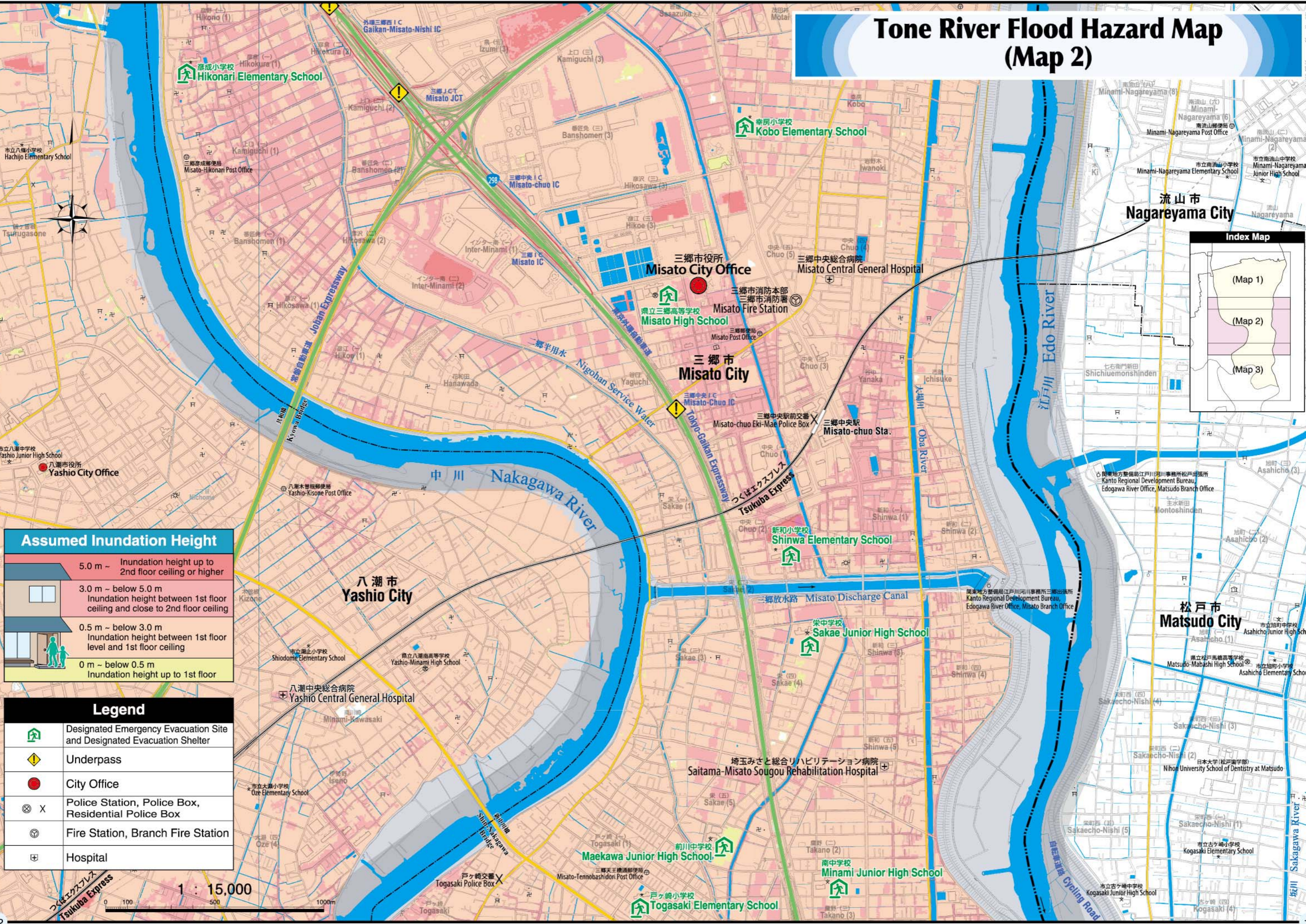


Legend	
	Designated Emergency Evacuation Site and Designated Evacuation Shelter
	Underpass
	City Office
	Police Station, Police Box, Residential Police Box
	Fire Station, Branch Fire Station
	Hospital

1 : 15,000



Tone River Flood Hazard Map (Map 2)



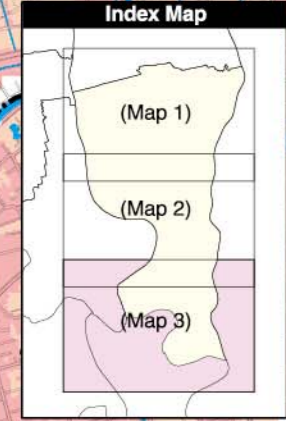
Assumed Inundation Height	
	5.0 m ~ Inundation height up to 2nd floor ceiling or higher
	3.0 m ~ below 5.0 m Inundation height between 1st floor ceiling and close to 2nd floor ceiling
	0.5 m ~ below 3.0 m Inundation height between 1st floor level and 1st floor ceiling
	0 m ~ below 0.5 m Inundation height up to 1st floor

Legend	
	Designated Emergency Evacuation Site and Designated Evacuation Shelter
	Underpass
	City Office
	Police Station, Police Box, Residential Police Box
	Fire Station, Branch Fire Station
	Hospital

1 : 15,000



Tone River Flood Hazard Map (Map 3)



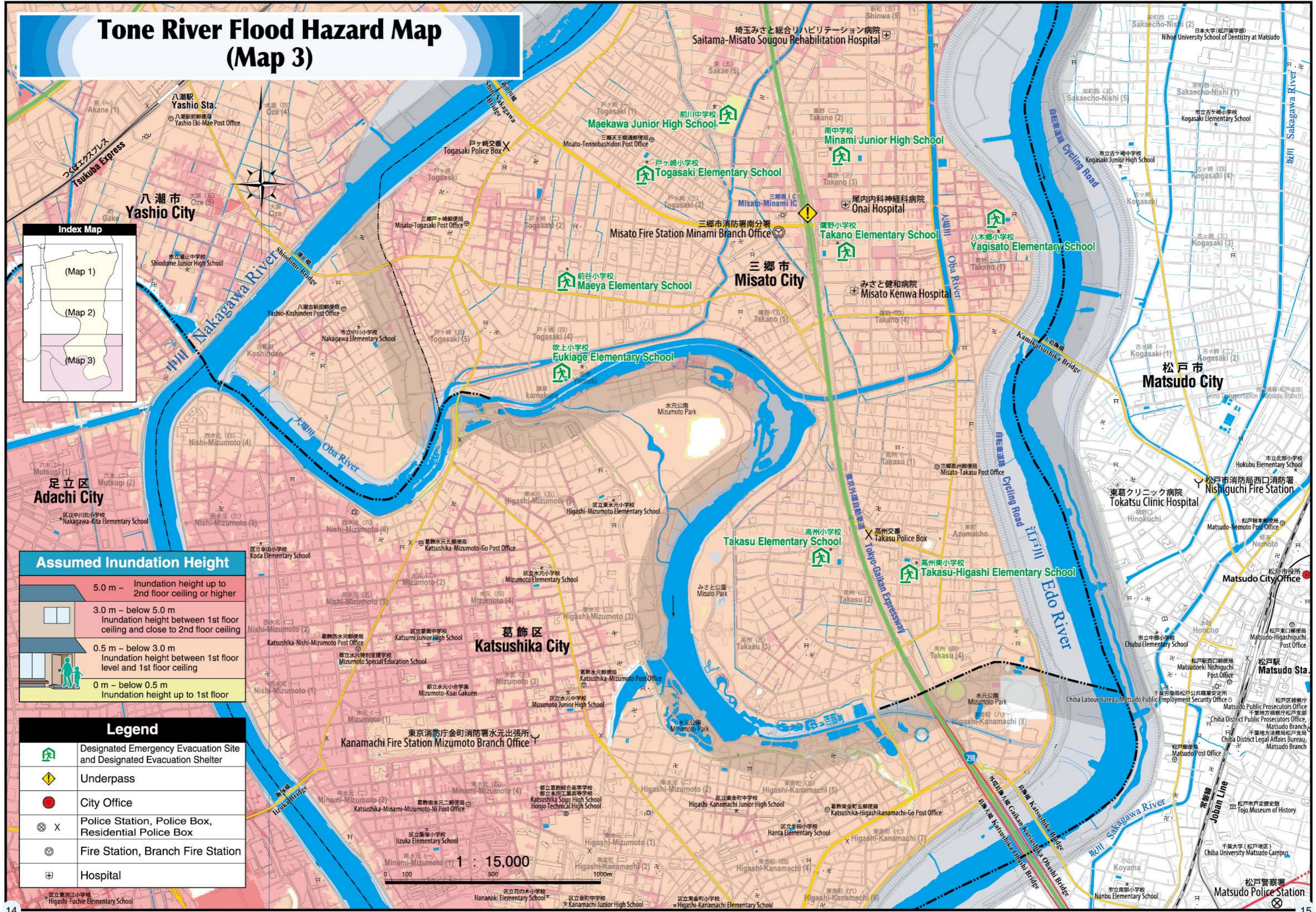
Assumed Inundation Height

	5.0 m ~ Inundation height up to 2nd floor ceiling or higher
	3.0 m ~ below 5.0 m Inundation height between 1st floor ceiling and close to 2nd floor ceiling
	0.5 m ~ below 3.0 m Inundation height between 1st floor level and 1st floor ceiling
	0 m ~ below 0.5 m Inundation height up to 1st floor

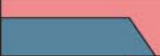



Legend

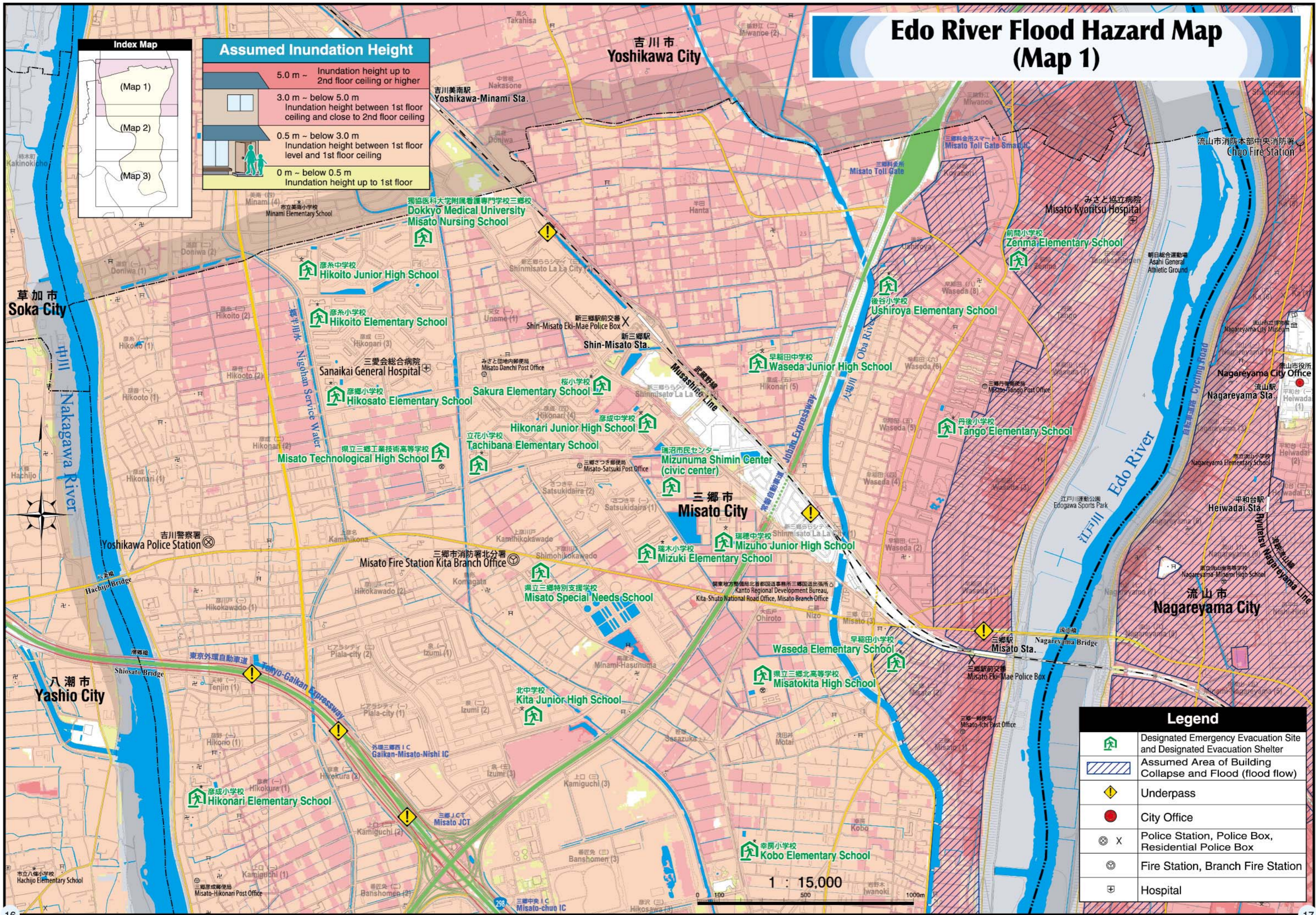
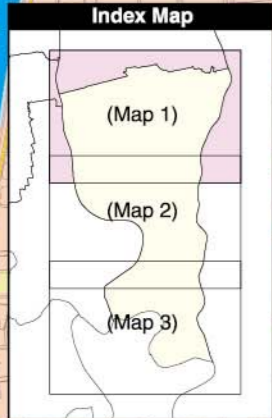
	Designated Emergency Evacuation Site and Designated Evacuation Shelter
	Underpass
	City Office
	Police Station, Police Box, Residential Police Box
	Fire Station, Branch Fire Station
	Hospital







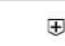
Scale: 1 : 15,000
0 100 500 1000m



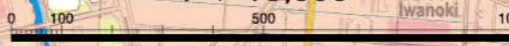
Edo River Flood Hazard Map (Map 1)

Assumed Inundation Height	
	5.0 m ~ Inundation height up to 2nd floor ceiling or higher
	3.0 m ~ below 5.0 m Inundation height between 1st floor ceiling and close to 2nd floor ceiling
	0.5 m ~ below 3.0 m Inundation height between 1st floor level and 1st floor ceiling
	0 m ~ below 0.5 m Inundation height up to 1st floor

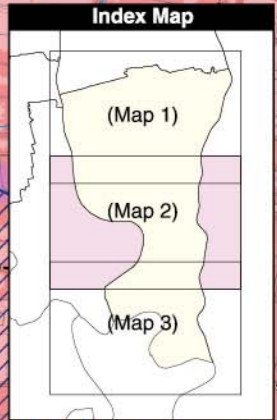
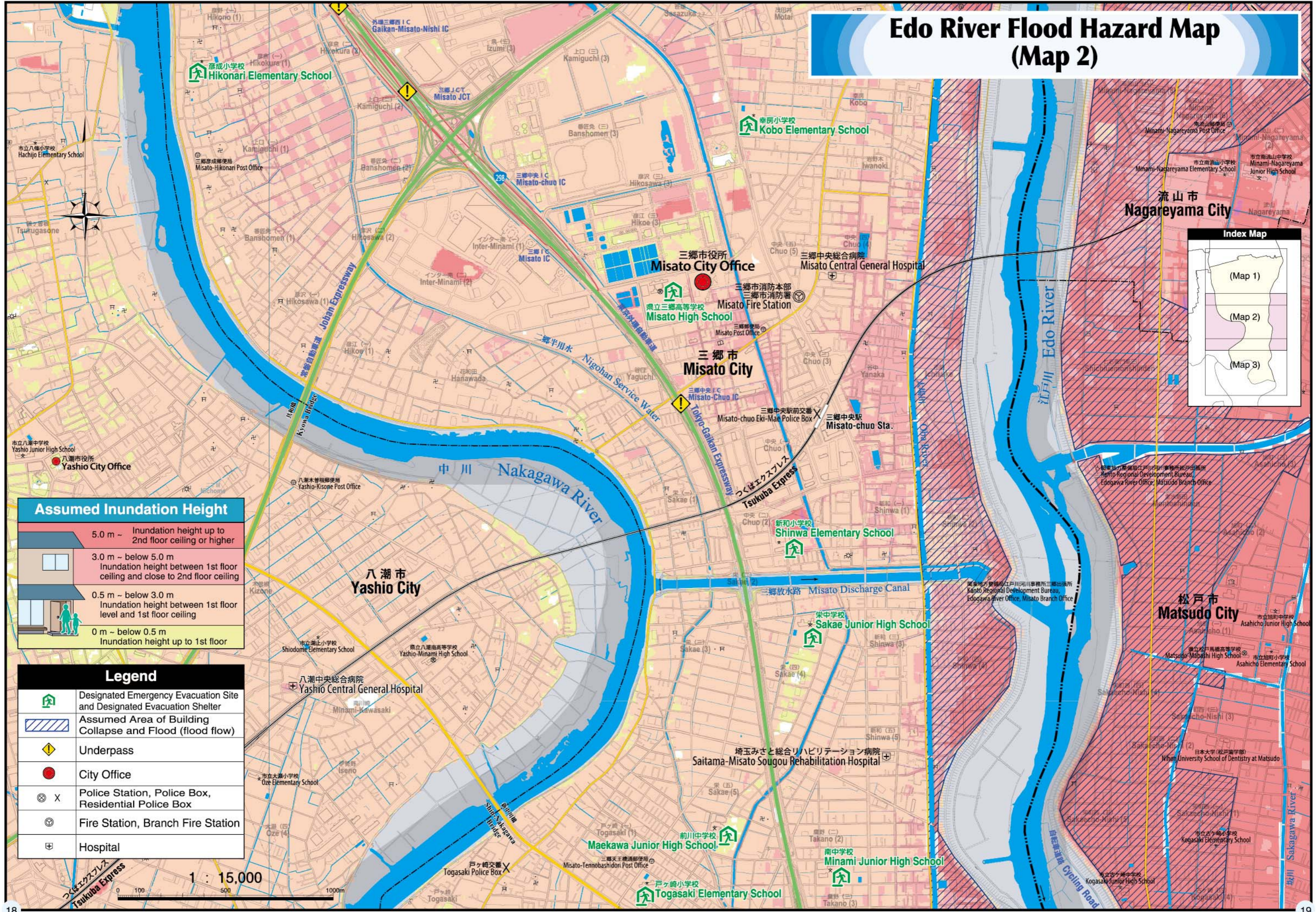


Legend	
	Designated Emergency Evacuation Site and Designated Evacuation Shelter
	Assumed Area of Building Collapse and Flood (flood flow)
	Underpass
	City Office
	Police Station, Police Box, Residential Police Box
	Fire Station, Branch Fire Station
	Hospital

1 : 15,000



Edo River Flood Hazard Map (Map 2)



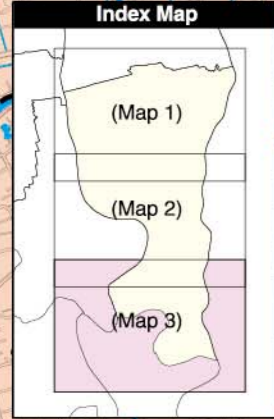
Assumed Inundation Height	
	5.0 m ~ Inundation height up to 2nd floor ceiling or higher
	3.0 m ~ below 5.0 m Inundation height between 1st floor ceiling and close to 2nd floor ceiling
	0.5 m ~ below 3.0 m Inundation height between 1st floor level and 1st floor ceiling
	0 m ~ below 0.5 m Inundation height up to 1st floor

Legend	
	Designated Emergency Evacuation Site and Designated Evacuation Shelter
	Assumed Area of Building Collapse and Flood (flood flow)
	Underpass
	City Office
	Police Station, Police Box, Residential Police Box
	Fire Station, Branch Fire Station
	Hospital

1 : 15,000

0 100 500 1000m

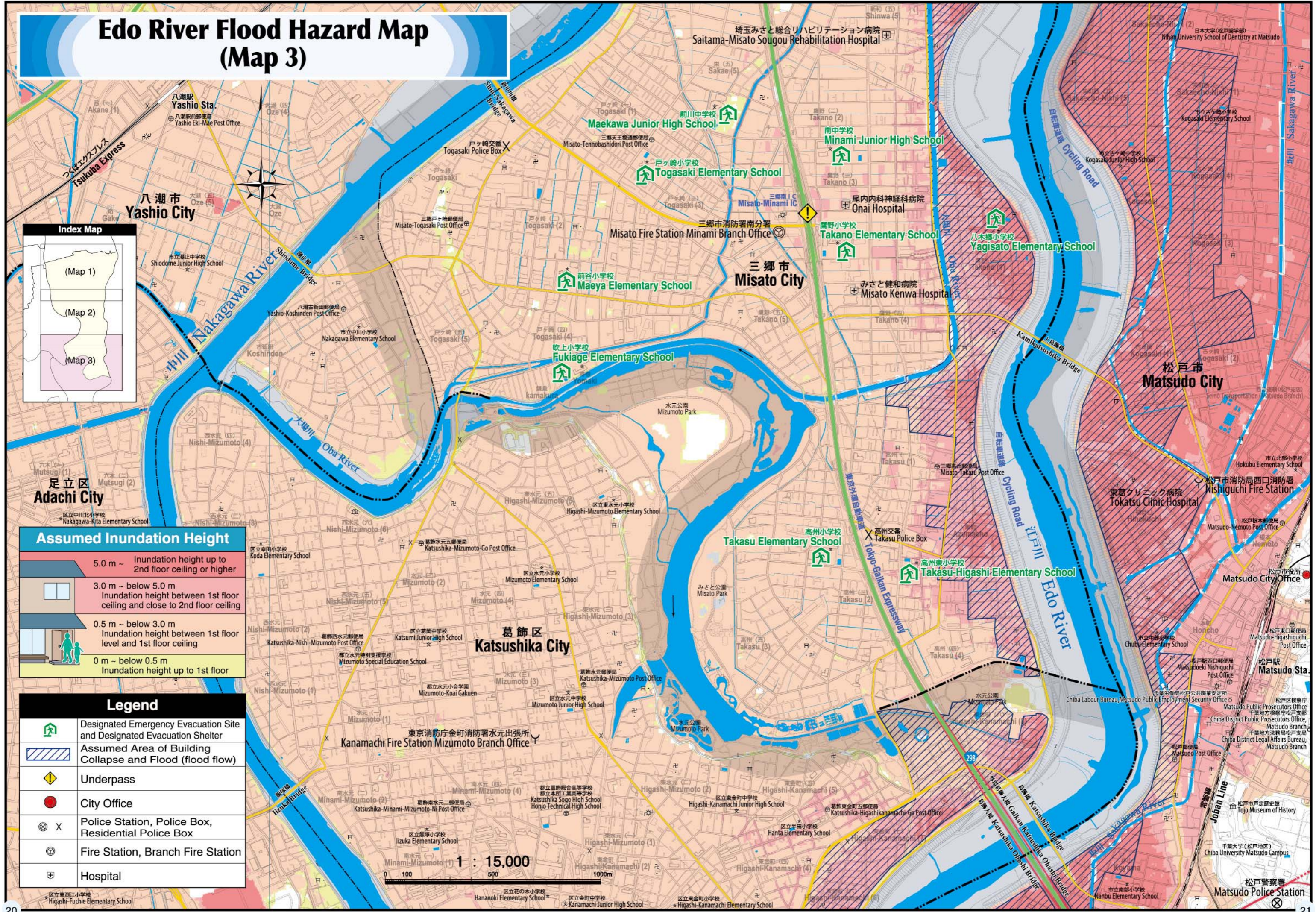
Edo River Flood Hazard Map (Map 3)



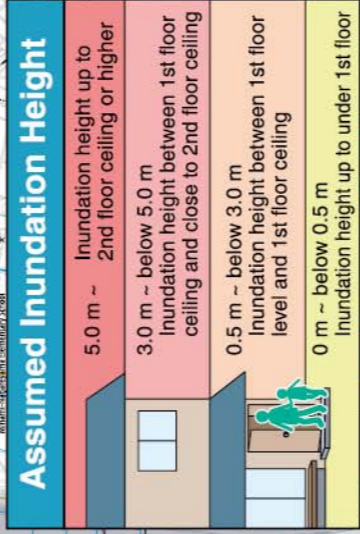
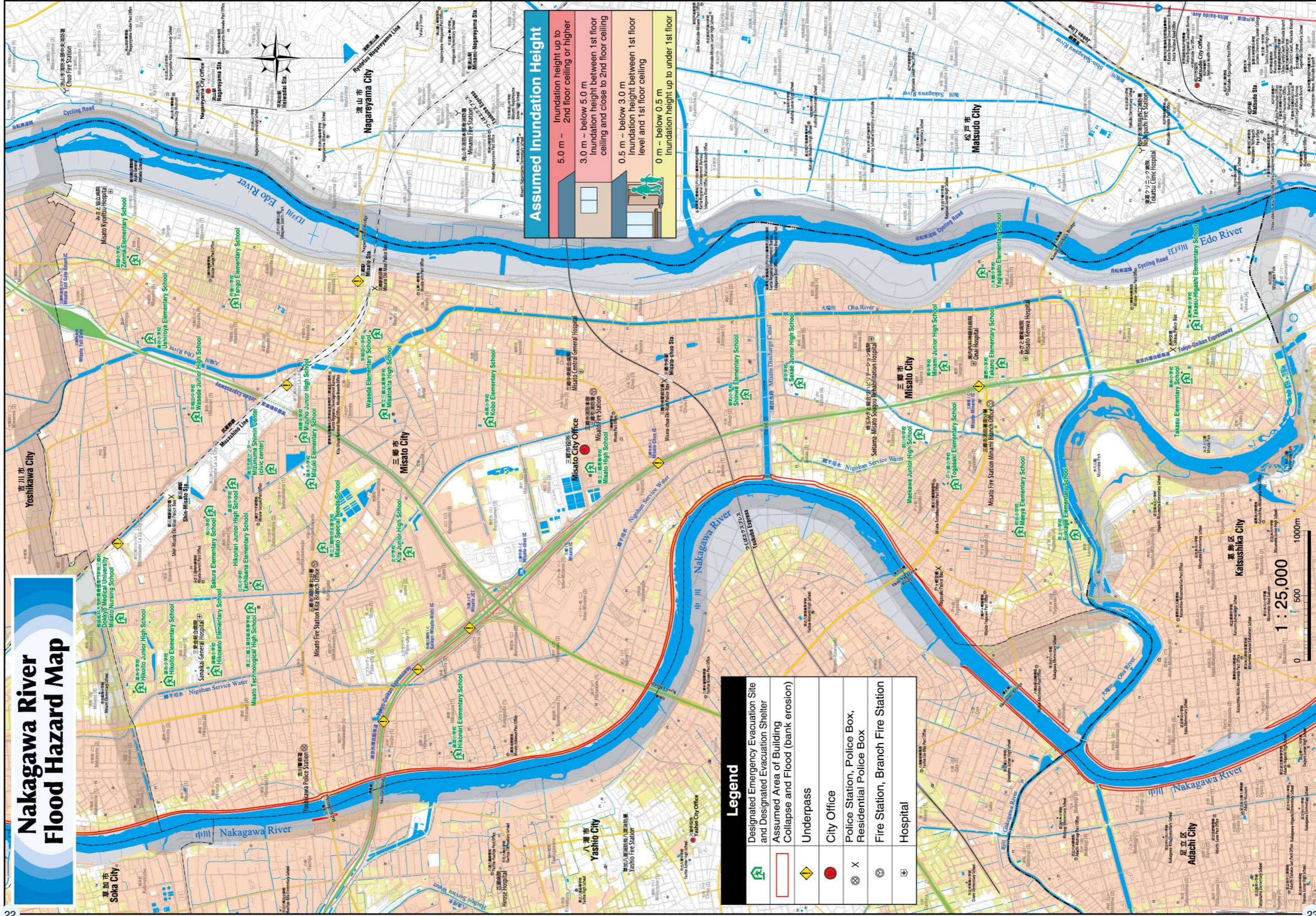
Assumed Inundation Height	
	5.0 m ~ Inundation height up to 2nd floor ceiling or higher
	3.0 m ~ below 5.0 m Inundation height between 1st floor ceiling and close to 2nd floor ceiling
	0.5 m ~ below 3.0 m Inundation height between 1st floor level and 1st floor ceiling
	0 m ~ below 0.5 m Inundation height up to 1st floor

Legend	
	Designated Emergency Evacuation Site and Designated Evacuation Shelter
	Assumed Area of Building Collapse and Flood (flood flow)
	Underpass
	City Office
	Police Station, Police Box, Residential Police Box
	Fire Station, Branch Fire Station
	Hospital

Scale: 1 : 15,000
 0 100 500 1000m



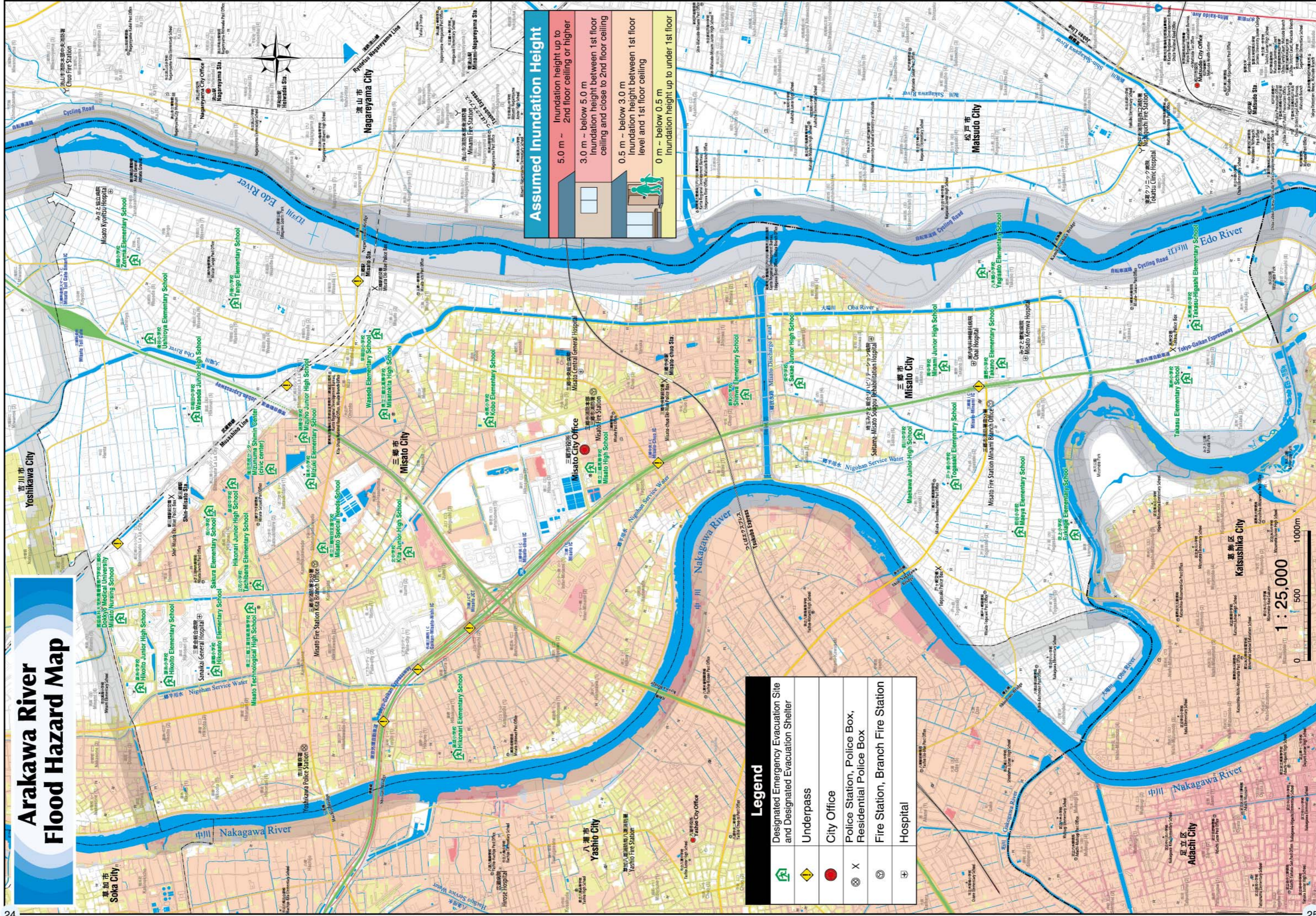
Nakagawa River Flood Hazard Map



Legend

	Designated Emergency Evacuation Site and Designated Evacuation Shelter
	Assumed Area of Building Collapse and Flood (bank erosion)
	Underpass
	City Office
	Police Station, Police Box, Residential Police Box
	Fire Station, Branch Fire Station
	Hospital

Arakawa River Flood Hazard Map



Assumed Inundation Height

5.0 m ~	Inundation height up to 2nd floor ceiling or higher
3.0 m ~ below 5.0 m	Inundation height between 1st floor ceiling and close to 2nd floor ceiling
0.5 m ~ below 3.0 m	Inundation height between 1st floor level and 1st floor ceiling
0 m ~ below 0.5 m	Inundation height up to under 1st floor

Legend

	Designated Emergency Evacuation Site and Designated Evacuation Shelter
	Underpass
	City Office
	Police Station, Police Box, Residential Police Box
	Fire Station, Branch Fire Station
	Hospital

1 : 25,000

0 500 1000m

Flood Simulation

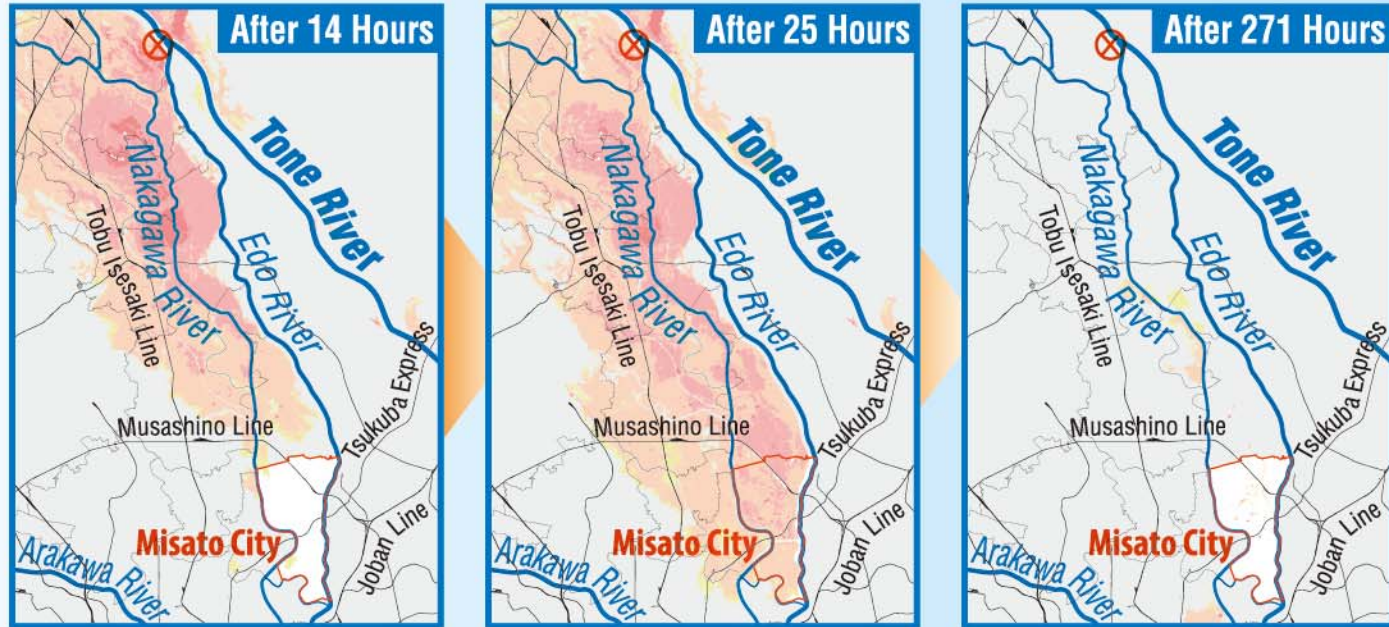
Flood simulation shows the course of time and the inundation height in case the river bursts the bank and floods Misato City.
The "⊗" shows the site of river burst.

Assumed Inundation Height

- 5.0 m ~
- 3.0 m ~ below 5.0 m
- 0.5 m ~ below 3.0 m
- 0.0 m ~ below 0.5 m

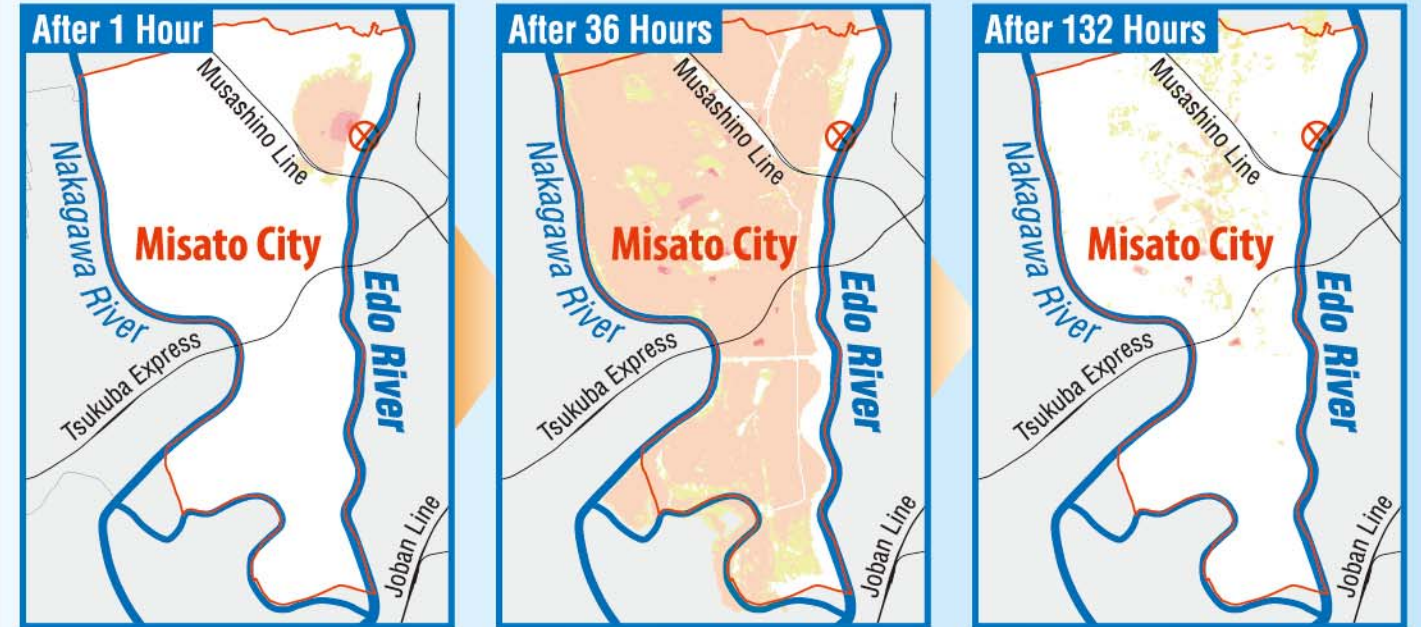
Tone River

"⊗": West Bank Levee of Tone River in Goka Town (122.5km from river mouth)



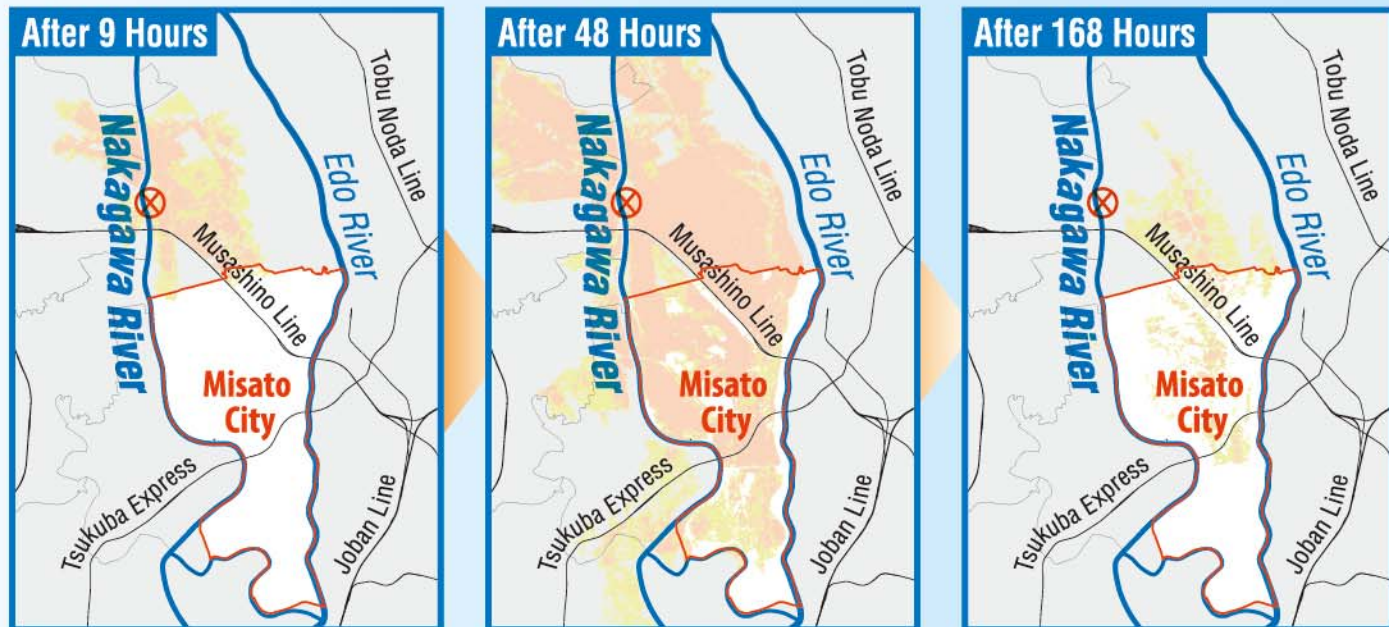
Edo River

"⊗": West Bank Levee of Edo River in Misato City (27.5km from river mouth)



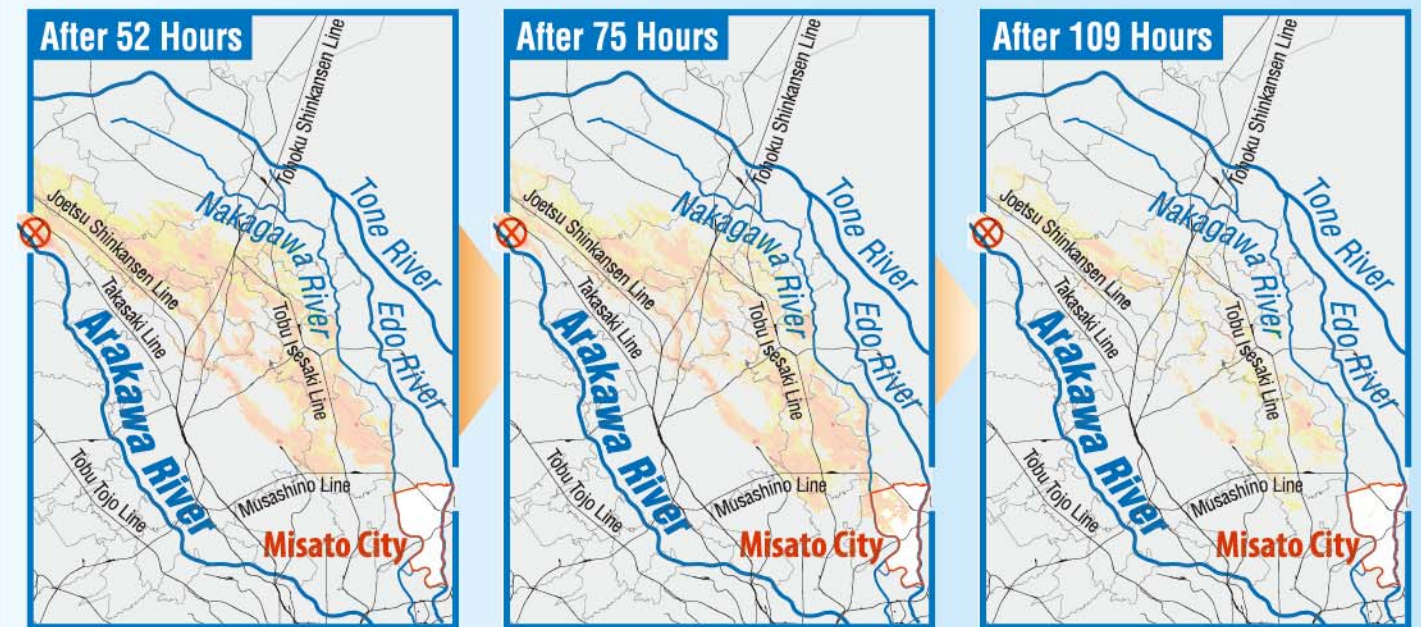
Nakagawa River

"⊗": East Bank Levee of Nakagawa River in Yoshikawa City (30.5km from river mouth)



Arakawa River

"⊗": East Bank Levee of Arakawa River in Yoshikawa City (65.2km from river mouth)

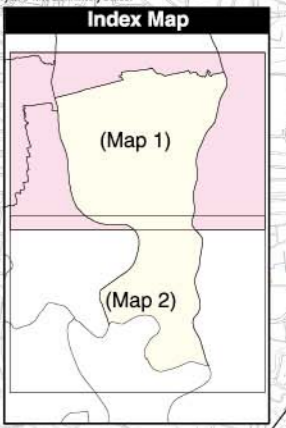
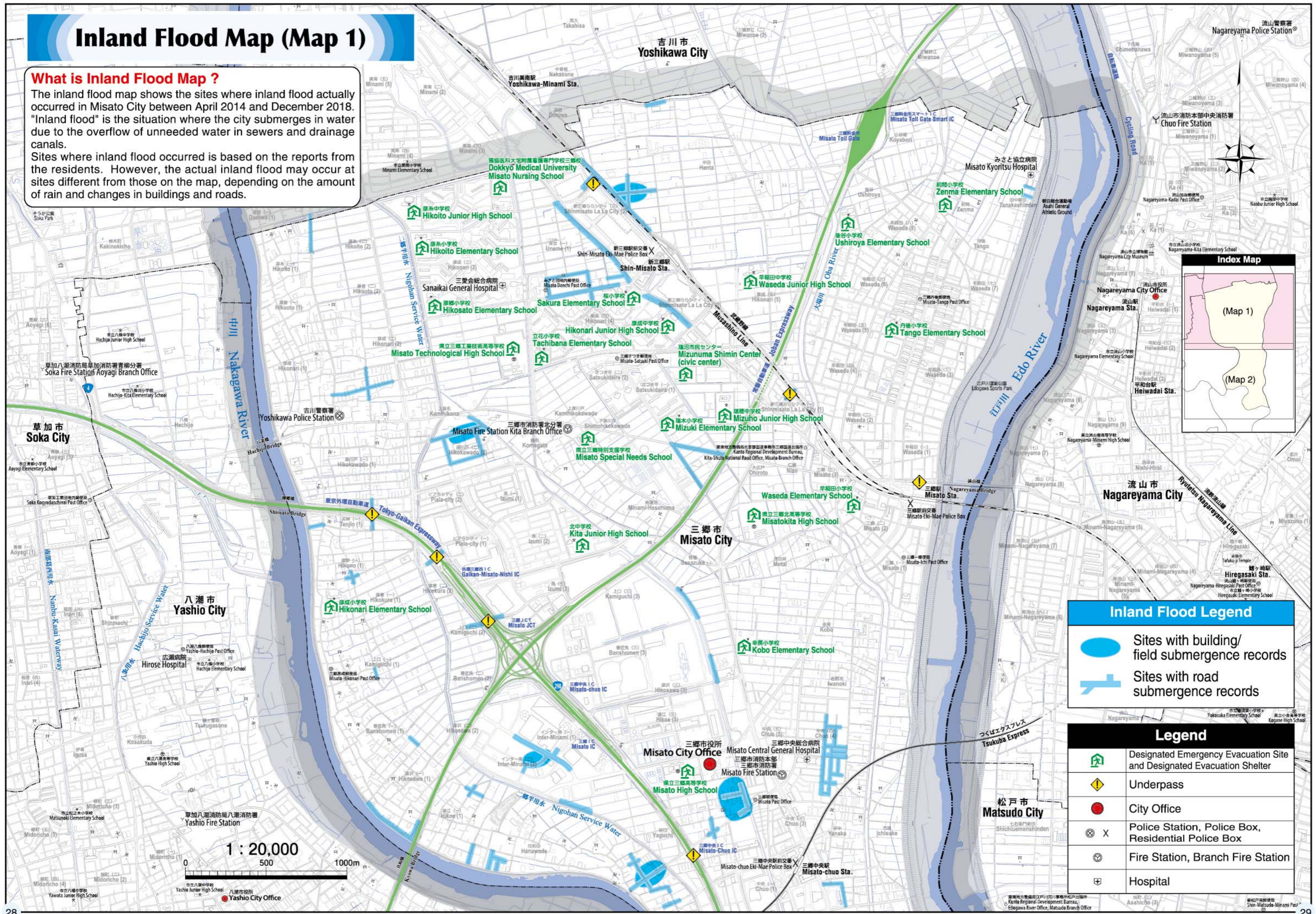


Inland Flood Map (Map 1)

What is Inland Flood Map ?

The inland flood map shows the sites where inland flood actually occurred in Misato City between April 2014 and December 2018. "Inland flood" is the situation where the city submerges in water due to the overflow of unneeded water in sewers and drainage canals.

Sites where inland flood occurred is based on the reports from the residents. However, the actual inland flood may occur at sites different from those on the map, depending on the amount of rain and changes in buildings and roads.

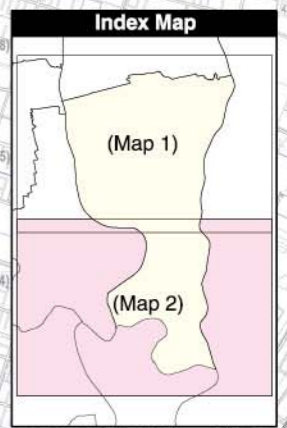
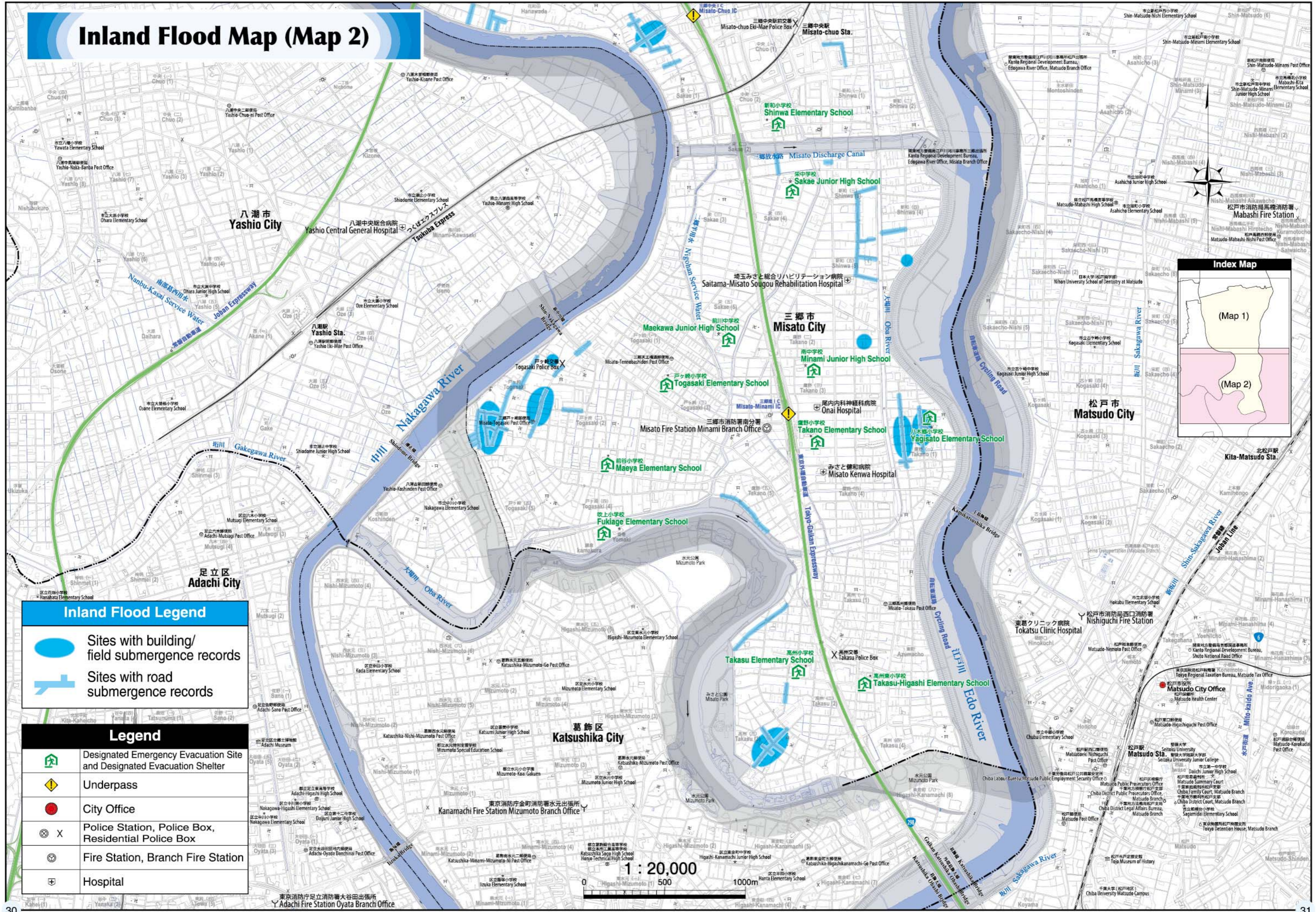


Inland Flood Legend	
	Sites with building/field submergence records
	Sites with road submergence records

Legend	
	Designated Emergency Evacuation Site and Designated Evacuation Shelter
	Underpass
	City Office
	Police Station, Police Box, Residential Police Box
	Fire Station, Branch Fire Station
	Hospital



Inland Flood Map (Map 2)



Inland Flood Legend

- Sites with building/field submergence records
- Sites with road submergence records

Legend

	Designated Emergency Evacuation Site and Designated Evacuation Shelter
	Underpass
	City Office
	Police Station, Police Box, Residential Police Box
	Fire Station, Branch Fire Station
	Hospital

Scale: 1 : 20,000
 0 500 1000m



When to Evacuate

Start Evacuating Before the Flood

When a typhoon or heavy rain cause a lot of rainfall, the amount of water flowing to the river increases in an extraordinary level. When such a condition continues, it leads to a "flood."

Misato City announces information to encourage evacuation to safer places when the risk of flood becomes higher. Check the emergency administration radio, Misato City website, and social network often and when the evacuation information is announced, start evacuating while you are still safe.

"HINAN": Keyword to Danger

"避難 (HINAN) = evacuation" means to "move away from a dangerous place." The higher the announced Alert level is, the more your life is at risk.

Alert Level 2

- A situation where the weather forecast announces "大雨注意報 =heavy rain advisory" or "洪水注意報 =flood advisory."
- Check the location of the evacuation site and the route from your home to there.

Alert Level 3: Equivalent to Evacuation Preparation/ Start of Evacuation for the Elderly

- A situation where the weather forecast announces "大雨警報 =heavy rain warning" or "洪水警報 =flood warning."
- Check the location of the evacuation site and the route from your home to there.
- Prepare to evacuate anytime.
- Pay attention to the radio/TV broadcast and public announcements from the city office.
- **Elderly and children should start evacuating.**

Alert Level 4: Equivalent to Evacuation Recommendation

- A situation where there is a high risk of river overflow.
- When an evacuation recommendation is announced by the city, start evacuating immediately.
- Do not drive to evacuate.

Alert Level 4: Equivalent to (emergency) Evacuation Instruction

- A situation where there is a very high risk of river overflow.
- When an evacuation recommendation is issued by the city, complete the evacuation at once.

Alert Level 5: Equivalent to Flood Outbreak Information

- The river has overflowed and is flooded now. There is a possibility of inundation in the city.
- It is dangerous to walk outside. Stay in the building and move to a room where does not flood.
- Take actions to save your life not to be washed away or drowned by the water getting through.

Move Away from Misato City Before Heavy Weather

There are many big rivers around Misato City. When those rivers overflow, there is a risk that the entire Misato City submerges in water. When a typhoon or heavy rain is expected to become more intense, consider voluntary evacuation before evacuation information is issued.

A voluntary evacuation is an action to secure physical safety by moving to a family member or a friends' house or your office where do not flood.

① Voluntary Evacuation Outside Misato City – Move to areas that do not flood

- You have a place to evacuate voluntarily in flood free areas of Misato City & Surrounding Area Flood Hazard Map (p8-9) or in an area where damages due to the typhoon or heavy rain are assumed to be small.
- Contact your family member or friend who live in safe places to secure the place to evacuate voluntarily.
- When you are moving to the voluntary evacuation place, carry your emergency essentials (p8) with you.
- Check the situation of the transportation service and the roads to the voluntary evacuation place.

Evacuate Here

When an evacuation recommendation is issued, ①evacuate the building or ②evacuate vertically immediately. On ①building evacuation, move to the designated emergency evacuation site. On ②vertical evacuation, move to the second floor or higher at your home. When there is a risk that your current location may flood, ①evacuate the building.

① Building Evacuation - Move to the designated emergency evacuation site

- On the hazard map (p8-31), the highest floor at your home is flooded.
- There is a risk that your house will be broken by river overflow.
- Your home or room is located underground or semi-underground.
- Your home or room is located in the site where inundation may continue a few days or longer.
- You were told by Misato City or the police or fire stations to go to the designated emergency evacuation site.



② Vertical Evacuation - Move to the second floor or higher at your home

- Your home has a room located at a flood free height/floor on the hazard map (p8-31).
 - When the inundation height is less than 3.0m, move to the 2nd floor or higher with the building.
 - When the inundation height is less than 5.0m, move to the 3rd floor or higher with the building.
- [Necessities for vertical evacuation]
- Water/food: Allows you to live inside your home even if you are not able to go outside.
 - Landline telephone/smartphone/PC: Allows you to contact your acquaintances or the police immediately.
 - TV/radio: Allows you to check the weather forecast, evacuation information and damage situation.

* When your house or room is broken or you have been told by Misato City or the police or fire stations to go to the designated emergency evacuation site, move to the designated emergency evacuation site immediately.





How to Be Informed of the Evacuation

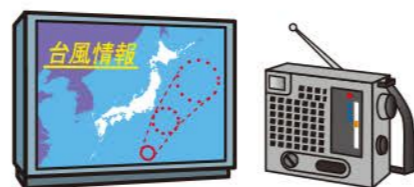
Channels to Be Informed of the Evacuation

At times of typhoon or heavy rain, check the weather forecast and news programs often. Even when the rain has stopped in your area, there are possibilities of massive rain water getting through to the river from other places and cause a flood. Continue to check the latest information until it has been confirmed that the risk of flood outbreaks has been lowered.

TV/Radio

Languages **Japanese**

- Check the weather forecast and news program you usually watch on TV or listen to on the radio.



TV Saitama Data Broadcasting

Languages **Japanese**

- Tune to TV Saitama (terrestrial channel 3).
- Press "d button" on your TV remote control.
- From the menu, choose "市町村からのお知らせ =Notices from your local municipality" and press the "決定 =set" button of the remote control.



Misato City Website

Languages **Japanese** **English** **Chinese**

- Evacuation information is announced when the risk of disaster is higher in Misato City.
- Announcement is on the opening status of designated emergency evacuation sites.
- On the PC website, you can select English and Chinese from "Foreign Language" on the upper right side of the home page.
- On the smartphone website, select "English" on the home page and it will switch to English.
- To switch between smartphone and PC websites, use the "Smartphone" "PC" buttons at the bottom of the page.



Misato City Website Home Page »

<http://www.city.misato.lg.jp/>

Misato City Official Facebook/Twitter

Languages **Japanese**

- Emergency information is announced where there is a higher risk of river overflow.
- Announcement is on the opening status of designated emergency evacuation sites.

Facebook Account:
@misatocity

Twitter Account:
@misatokoho

Japan Meteorological Agency Website

Languages **Japanese** **English** **Chinese** **Vietnamese**

- Japanese/English: Weather forecasts/weather warnings/advisory
- Multiple language pages shows the movements of the rain clouds,

Japan Meteorological Agency Website Home Page »

<https://www.jma.go.jp/>



Japan Meteorological Agency Website Multiple Language Page »

<https://www.jma.go.jp/jma/kokusai/multi.html>



Saitama Prefecture Website: Safety and Peace of Sai-no-Kuni

Languages **Japanese** **English** **Chinese** **Vietnamese**

- Evacuation information is announced when the risk of disaster is higher in Misato City.
- Shows what to prepare so that you will not get into trouble at times of disaster.
- On the PC website, you can select English, Chinese and Vietnamese from "Foreign Language" on the upper side of the home page. When the page is shown in English, select "Safety & Peace."
- On the smartphone website, you can select English, Chinese (simplified) and Vietnamese from "Foreign Language" on the search menu. When the page is shown in English, select "Safety & Peace."

Saitama Prefecture Website Home Page »

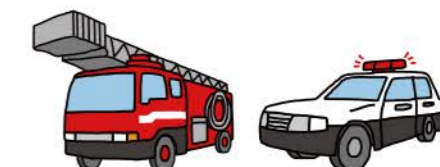
<https://www.pref.saitama.lg.jp/>



Fire Engine/Patrol Car

Languages **Japanese**

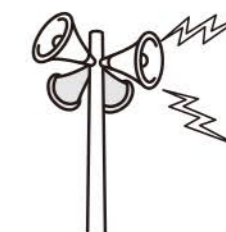
- Cruise through the city to deliver evacuation/disaster/transportation information.



Emergency Administration Radio

Languages **Japanese**

- Emergency Administration Radio is delivered through the outdoor speakers in various locations set by Misato City.
- Evacuation information is announced when there is impending danger in Misato City.
- You can hear the announcement on the phone.



From Landline or Public Phones
Phone: 0120-954-310

From Smartphones/Feature Phones
Phone: 048-953-1125



How to Be Informed of the Evacuation

Sign up to Be Informed of the Evacuation

Use the smartphone app "Safety tips" and sign up for "Misato City e-mail service" and you will receive information on typhoons, heavy rain, and evacuation when the risk of flood and disasters are higher.

Safety tips

Languages [Japanese](#) [English](#) [Chinese](#)

- Shows the weather forecast and evacuation information of your current and registered locations.
- When a weather warning or advisory is issued from the JMA on your current or registered location, you will receive a push notice.
- Search also on medical institution with English-speaking staffs.
- Only the communication fee is required to use the app.

Download "Safety tips" from Here »

 [for Android]
 [for iOS]

Early Warning E-mail

Languages [Japanese](#)

- A free service for users of NTT DoCoMo, au, and SoftBank smartphone/feature phones.
- Sends you e-mails of evacuation information, etc. at times of emergency such as disaster outbreaks.
- You will need to set your phone in advance to accept early warning e-mails.



Misato City E-mail Service

Languages [Japanese](#)

- Sends you e-mails of information on disaster outbreaks and fire fighting.
- Also sends e-mails of information on crime prevention as well as health and events.
- You will need to sign up in advance for the e-mail service.

Sign-up Page for Misato City E-mail Service [Sign up from smartphones/feature phones]

<https://service.sugumail.com/s-misato/>



[Sign up from PC]

<https://service.sugumail.com/s-misato/member/>

Saitama Prefecture Disaster Prevention E-mail

Languages [Japanese](#)

- Sends e-mails of your preferred emergency information at times of disaster.
- Emergency information includes evacuation, evacuation shelter openings, and earthquakes.
- You will need to sign up in advance for the e-mail service.

Saitama Prefecture Disaster Prevention E-mail Description Page »



<http://saitamapref.bosai.info/bosaimail/index.html>



Communication Channels at Times of Disasters

Use Social Network and Disaster Message Board

When a typhoon or an earthquake causes massive damages, there will be a sudden increase of phone uses to confirm people's safety, which will cause the jam of phone lines and make calls difficult to get through. To confirm someone's safety, use the social network which you usually use to contact your family and friends, or the disaster message boards that start working when a major disaster takes place.

The message left on the Web171 Disaster Message Board, the disaster message boards on smartphones/feature phones, and on the disaster voice mail system (171) can be confirmed from both sides.

Web171 Disaster Message Board

Languages [Japanese](#) [English](#) [Chinese](#)

[How to leave a message]

- Sign up your landline/feature phone/smartphone # from your PC or smartphone to leave a message.

[How to confirm the message]

- Enter the phone # of the person you wish to contact. When there is a message, the message will be shown.

Web171 Disaster Message Board Home Page »



<https://www.web171.jp/>

Disaster Message Boards for Smartphones/Feature Phones

Languages [Japanese](#) [English](#)

- Leave or confirm the message on the message board from the menu page of your smartphone/feature phone or the app "Disaster Message Board."
- On the carrier's disaster message boards, select "English" to switch the displayed language.

NTT DoCoMo Disaster Message Board Home Page »



<http://dengon.docomo.ne.jp/>

KDDI (au) Disaster Message Board Home Page »



<https://dengon.ezweb.ne.jp/>

SoftBank Disaster Message Board Home Page »



<http://dengon.softbank.ne.jp/>

Disaster Voice Mail Service (171)

Languages [Japanese](#)

- It starts working at the outbreak of a major disaster.
- Records the message addressed to landline/feature phone/smartphone #s.
- The recorded message will be audible when you dial the sender's phone #.
- The guidance for recording and listening will be done in a Japanese audio.

Disaster Voice Mail Service (171)

Phone #: 171

*No area code.



Things to Keep in Mind at Times of Evacuation

How to Evacuate Before the Flood

Misato City announces an evacuation information when the risk of flood becomes higher due to typhoons or heavy rain. Here are the reminders when you start ① evacuating the building which we explained on page 33.

● Check the Latest Information

- When the announced alert level is "Alert level 3: Equivalent to evacuation preparation/start of evacuation for the elderly" or higher, designated emergency evacuation sites may open.
- When the rain is getting stronger or the night is approaching, evacuation information is announced in accordance with the situation.



● Move in Comfortable Outfits

- Wear sport shoes and comfortable outfits when you move to the designated emergency evacuation site.
- Move with your family members, friends, and neighbors.



● Reminders at Times of Road Flood

- There are possibilities that you fall into the gutter or in the manhole with the lids off.
- When you walk flooded roads, use a long stick as canes to check safety at your foot.



● Move to a Tall Building If You are Running Late

- If it is too late to move to the designated emergency evacuation site, move to the upper floors of a sturdy building nearby.



● Evacuate When You Feel the Danger

- When you are told by Misato City or the police or fire stations to go to the designated emergency evacuation site, start taking action immediately.



● Don't Go Near Dangerous Places

- Try to avoid passing the riverside as much as possible.
- Do not pass underpasses and sites that sink lower than others, as they may be collecting water.



● Do not Drive to Move

- There are possibilities of traffic jams on the roads and your car may submerge in water and cannot move. Do not drive to the designated emergency evacuation site.



● Do not Move Underground

- Subways and underground malls are highly likely to flood.
- There are dangers such as the water gushing in at once, or the doors not opening due to heavy water pressure. Do not pass underground streets or evacuate underground.



Regular Preparation

Check the Closest Evacuation Site from Home

See the flood hazard map and check where your home and the designated emergency evacuation sites are. And write on the map the route that allows you to move to the designated evacuation shelter safely to make an evacuation map.

How to Make an Evacuation Map

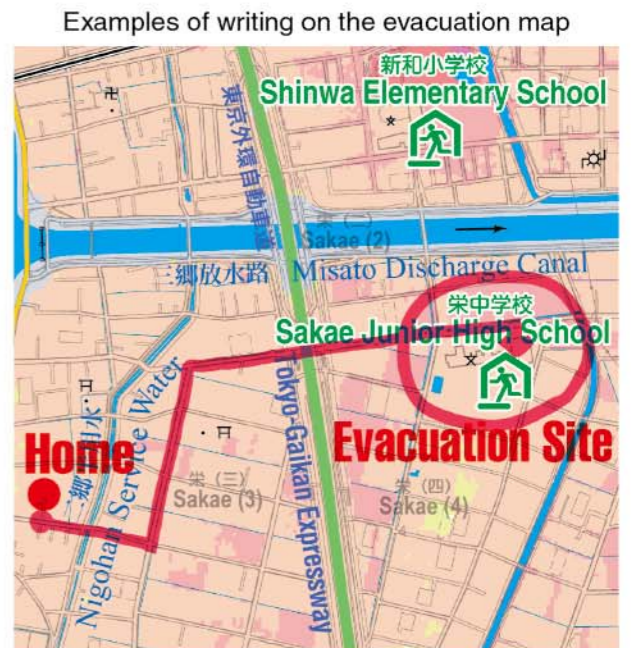
1. Check where your home and the designated emergency evacuation sites are.

- Use the hazard map on pages 10-25 and check where your home and the designated emergency evacuation sites are.
- There are 5 hazard maps: 4 rivers that cause floods and 1 inland flood map.
- On each map, check where your home and the designated emergency evacuation sites are and mark them with a pen.

2. Check the inundation heights of your home and the designated emergency evacuation sites.

- Use the hazard map on pages 10-25 and check the inundation height when the flood occurs.
- The inundation heights are stated in the color of the ground.

Light yellow...0m to 0.5m	Light orange...0.5m to 3.0m
Light pink...3.0m to 5.0m	Light red...5.0m or higher



3. Write down the route from your home to the the designated emergency evacuation site.

- Set the route to the designated emergency evacuation site.
- Write down the route on the map with a pen.

Try avoiding the following sites en route.

- Sites where inundation heights are higher
- Roads along the river
- Narrow roads
- Sites with marks of "Sites with building/field submergence records" "Sites with road submergence records" and "Underpass."



« On the Inland Flood Map, check the sites colored in "light blue" and "blue" and those marked "!". Do not pass those sites.

4. Walk the route from your home to the designated emergency evacuation site with everyone in your family.

- With the evacuation map in your hand, walk the actual route.
- When you walk, check if there are any dangerous sites. If there are dangerous sites, change to a different route.
- Check the time you took from your home to the designated emergency evacuation site. Note that you will take more time to move than usual at times of heavy rain.

Daily Essentials Needed for Disasters

At times of major disaster, you may experience electricity, gas, or water outage. Daily essentials may also become unavailable. Make sure to have stocks of daily essentials in your daily lives.

Emergency Essentials

- When you evacuate to the designated emergency evacuation site or a flood free room at your home, bring the emergency essentials with you.
- Carry your emergency essentials in a bag that you can carry on your back, such as backpacks.
- Keep your emergency essentials where you can take out immediately.
- When you move to another place, bring the items which you always carry with you, such as smartphones and wallets.

Examples of Emergency Essentials

<input type="checkbox"/> Cash (change)	<input type="checkbox"/> Identification (driver's license, residence card, special permanent resident certificate, etc.)	<input type="checkbox"/> Health insurance card	<input type="checkbox"/> Credit card	<input type="checkbox"/> Bank passbook
<input type="checkbox"/> Feature phone/smartphone	<input type="checkbox"/> 1 day's worth of drinking water (3 liters per person)	<input type="checkbox"/> 1 day's worth of readymade meal (nutritionally balanced food, bread, jelly drink pouches, etc.)	<input type="checkbox"/> Portable radio	<input type="checkbox"/> Helmet
<input type="checkbox"/> Rain coat				

Stockpiles

- Stockpiles are foods and utensils necessary to go about minimum everyday lives without electricity, gas, and water.
- Stock at least 3 days', preferably 1 week's worth of drinking water and food.
- Think about what utensils you and your family will need when you prepare for them.

Examples of Stockpiles

Drinking water/daily life water

- Stockpile of 3 days' worth of water (3 liters x 3 days per person)
- Drinking water
- Water bottle



Groceries

- Stockpile of 3 days' worth of groceries
- Vacuum-packed foods
- Snacks
- Canned foods
- Simple tableware
- Baby formula
- Paper cups
- Chopsticks
- Spoons
- Can opener/knife
- Plastic wraps

Examples of Stockpiles

Clothes etc./sanitary goods

- Clothes
- Towels
- Toothbrushing goods
- Wet tissue paper
- Masks
- Tissue paper
- Cotton work gloves
- Portable toilets
- Women's sanitary products
- Paper diapers
- Garbage bags
- Toilet paper rolls

Drugs and medicines

- First aid kit (antiseptic, vulnery, gauze, bandage, band-aid)
- Scissors
- Tweezers
- Disposable body warmers
- Regular medication
- Cotton wool pads

Stockpiles for electricity outage

- Extra batteries
- Flashlights (sizes large/small)

Stockpiles for fuel

- Solid fuel
- Gas cartridges
- Gas cartridge tabletop stove

Others

- Lamp
- Lighter
- Candles
- Sleeping bags
- Whistles
- Packing tapes
- Newspaper
- Ropes
- Writing tools
- Marker pens

Use Translation Apps to Talk

At times of disaster, you will hear Japanese words that are not used in daily life. Sometimes those words are not understandable in Japanese. Use translation apps to talk in your languages as well as Japanese.

VoiceTra

Languages Japanese English Chinese Vietnamese

- A smartphone app that translates Japanese into other languages.
- Translate from voice or character entry.
- Translations available in 31 languages including English, Chinese (Simplified), Vietnamese, etc.
- Only the communication fee is required to use the app.

Download VoiceTra from here »

[for Android]

[for iOS]

How to Use VoiceTra

Default setting is Japanese to English translation.

Swipe here to the write and you will be directed to the page that translates foreign languages to Japanese. The field to enter the foreign language is colored orange.

Tap here for voice entry.

Tap here for character entry.

Hold down here to change the language.

Our Disaster Prevention Memorandum

Designated Emergency Evacuation Site				
Name	Blood Type	Phone #	Name/Contact of Workplace/ School	Health Info (chronic disease, regular medication, etc.)
	Type Rh+ Rh-			
	Type Rh+ Rh-			
	Type Rh+ Rh-			
	Type Rh+ Rh-			
	Type Rh+ Rh-			
	Type Rh+ Rh-			
	Type Rh+ Rh-			
	Type Rh+ Rh-			

Disaster Prevention Authorities

City Office/Branch Office

Misato City Office	648-1 Hanawada	048-953-1111
Misato Danchi Branch Office	3-7-3-102 Hikonari	048-957-2121

Fire-defense Headquarters/Fire Stations

Misato City Fire-Defense Headquarters/Fire Station	5-45-4 Chuo	048-952-1211
Fire Station Minami Branch Office	3-474 Takano	048-955-0911
Fire Station Kita Branch Office	886 Kami- Hikokawado	048-952-2291

Other Facilities

Yoshikawa Police Station	144-3 Kami-Hikona	048-958-0110
Misato-Chuo Eki-Mae Police Box	1-2-3 Chuo	048-952-2446
Shin-Misato Eki-Mae Police Box	3-4-3 Shinmisato La La City	048-957-1626
Togasaki Police Box	2262-4 Togasaki	048-955-7767
Misato Eki-Mae Police Box	1-1-1 Misato	048-953-1664
Takasu Police Box	2-316-3 Takasu	048-955-9468
Misato City Waterworks	200 Motai	048-952-7101

Useful Information for Everyday Life

Saitama Prefecture Website: A Guide to Living in Saitama

Languages [Japanese](#) [English](#) [Chinese](#) [Vietnamese](#)

- A guidebook with useful everyday life information for foreigners.
- Features information on emergency, health insurance and medical treatment, everyday life, and consultation services.
- The guidebook is available in 7 languages besides Japanese.
- The English and Chinese versions are available on the website.
- The Vietnamese version is available on a pdf file which can be opened after you unzip the zip file.

Saitama Prefecture Website:
A Guide to Living
in Saitama Page »

- This page is in Japanese, but it has links to "A Guide to Living in Saitama" in different languages.



<http://www.pref.saitama.lg.jp/english/index.html>

Published by: Risk Management & Disaster
Prevention Division, Environmental
Safety Department, Misato City

648-1, Hanawada, Misato City, Saitama 341-8501
Phone: 048-952-1294 (direct line) / Fax: 048-952-6780
Issued: December 2019

Misato City website <http://www.city.misato.lg.jp/>